

# Precision Agriculture Series

**Thursday, February 20**

**Friday, March 6**

**Friday, March 27**

**10:00AM - NOON**

**CCE Genesee**

420 East Main Street  
Batavia, NY 14020

**Interested in learning more about how Precision Agriculture can be implemented on your farm?**

Sessions are **FREE**—registration is still required.

## Precision Agriculture (Introduction)

- Why should producers be interested in precision agriculture?
- Goals, Key Factors, Information, Technology, Management

## Components of Precision Agriculture Equipment

- Key components, equipment, computer/controllers, sensors, GIS, GPS, remote sensing, satellite imagery, UAV's

## Agricultural management philosophy (PA perspective)

- What is zone management?
- Best management practices
- Soil and Tillage Management

## Precision soil sampling vs. grid sampling

## Soil electrical conductivity (EC) and ways to measure it

- Soil EC: Veris vs. EM38, EC vs. soil texture, and EC vs. Yield Maps

## Site specific management /variable rate applications

- Variable depth tillage control, variable seeding rate, automatic section control, variable rate irrigation, and variable irrigation based on soil texture

## Map Principles

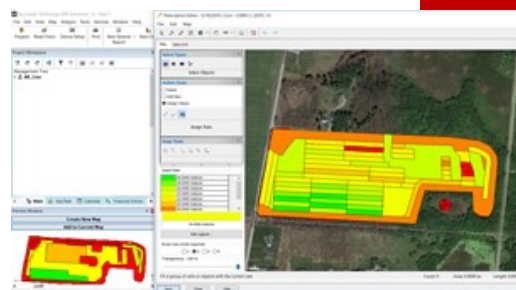
- Why is map-making important?
- Yield maps vs. prescription maps
- Importance of yield monitors, yield monitoring components, calibration and factors that effect on it.

## Introduction to NDVI

- Characteristic of NDVI values
- NDVI estimation and photo analysis

## Economics of using precision agriculture

## Preferred methodology and benefits, evaluation

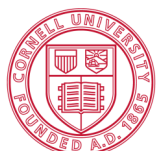


*Brought to you by:*

**Ali Nafchi, Ph.D.** Precision Ag. Specialist,  
NWNY Dairy, Livestock & Field Crops Team  
and the Cornell Vegetable Program

**Registration is required.** Register online at: <https://nwnyteam.cce.cornell.edu/events.php>

To Register by phone, call Brandie at: 585-343-3040 x138



Cornell Cooperative Extension of Genesee County • 420 E. Main Street, Batavia, NY 14020  
p: 585-343-3040 • e: [genesee@cornell.edu](mailto:genesee@cornell.edu) • w: <http://genesee.cce.cornell.edu/>

Cornell Cooperative Extension is an employer and educator recognized for valuing AA/EEO, Protected Veterans, and Individuals with Disabilities and provides equal program and employment opportunities.