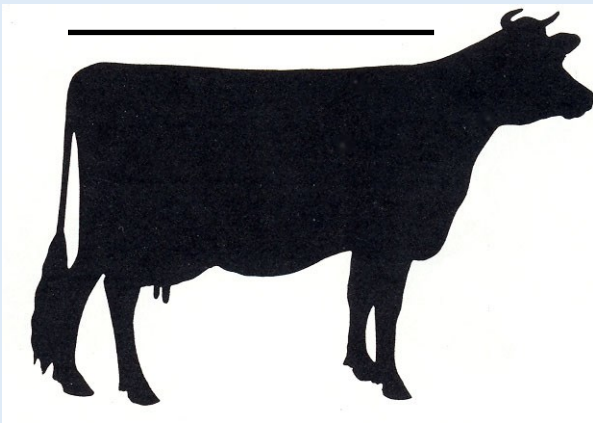


2017 Winter Dairy Management

Don't Be Lame! Factors and Impacts upon Lameness



Wednesday, March 8, 2017

Registration 9:30am,

Program 10am-3pm

CCE Broome County,

840 Front Street, Binghamton, NY

Cost \$25 if pre-registered by March 1, \$30 at door, includes lunch

Topics & Speakers

Identifying lameness especially at its earliest stages. Strategies and protocols for consistently identifying lameness ASAP. *Chip Hendrickson*

Economic Impact of lameness. Cull cows, decreased repro performance, decreased milk production, increased vet costs, increased labor requirements, etc. *Neil Andrew*

Facilities Impact on lameness. Stall design, alley design, flooring surfaces, bedding materials and management. *Lindsay Ferlito, NNY dairy extension specialist*

Management factors that impact lameness. Stocking density, nutrition-ration, feeding strategy, ventilation, heat abatement, trimming schedules, body condition, pasture access and adjusting to concrete, integrating heifers, general group management to limit injury. *Curt Gooch, ProDairy*

Registration Information:

Call Jen Atkinson at 607.391.2662 or email jma358@cornell.edu

Pay online at <http://scnydfc.cce.cornell.edu/event.php?id=483>



Cornell University
Cornell Cooperative Extension
South Central New York Dairy & Field Crops

