

PRO-DAIRY

Reducing Replacement Heifers Rearing Cost through Improved Reproductive Management

Replacement cows generated by the heifer rearing enterprise are critical to the future of dairy farms. Nevertheless, raising heifers represents a major cost burden accounting for as much as 15 to 20% of the total cost of production. Thus, minimizing the duration of the non-lactating period by reducing days to pregnancy can help reduce farm operating costs. We will present new research data evaluating different reproductive management programs for dairy heifers in commercial dairy farms. The impact of these strategies on the reproductive performance and economics of heifers during their non-lactating period and their first lactation will be discussed.

Fresh Cow Calcium Supplementation-To Treat or Not to Treat

A recent large trial conducted on farms in New York State has provided insight into which cows truly benefit from oral calcium supplementation. We will review the trial results to help you make practical decisions regarding post-calving calcium supplementation in your herds.

Supported by:



Cornell University

Summer Dairy Research Update:

- Heifer Reproduction
- Hypocalcemia



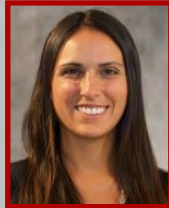
Julio O. Giordano, DVM, MS, PhD

Cornell University

St. John Family Sesquicentennial

Assistant Professor – Dairy Cattle Biology & Management

Department of Animal Science



Magdalena Masello Souza, DVM

Cornell University

PhD Student—Dairy Cattle Biology & Management

Lab



Robert A. Lynch, DVM

Cornell University PRO-DAIRY Program

Herd Health & Management Specialist

Where:

Genesee Co CCE Office

420 E Main St.

Batavia, NY

When:

Date: Sep 6th

Time: 7-9 PM

Registration is free, but you need to register so we have refreshments and dessert for everyone.

Contact **Rob Lynch** by Sep 4th:

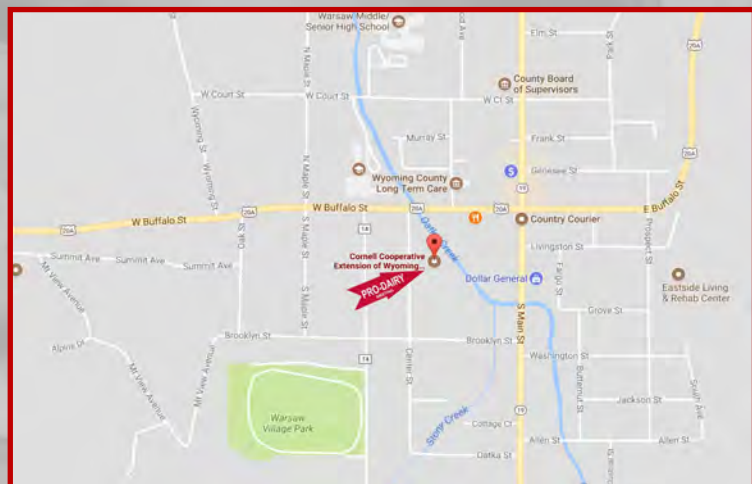
rlynch@cornell.edu

—or—

607.882.5378

RSVP with:

- Name
- Farm/Clinic/Business
- # Attending



PRODAIRY.CALS.CORNELL.EDU