

# Comell Cooperative Extension North Country Regional Ag Team



## Preventing Sexual Harassment on Farms- Tools for Employers:

*Updates and Resources for the NYS Sexual Harassment Regulations.*

Dates: July 29<sup>th</sup> & July 30<sup>th</sup>

Cost: \$10 (to be paid to each office directly)

Time: 10:00AM-1:00PM

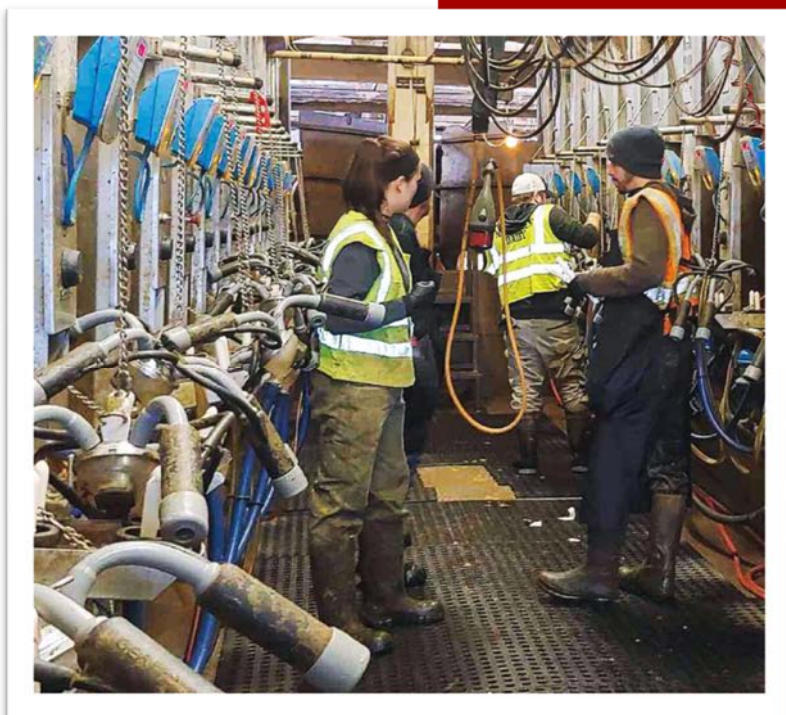
Locations: Speakers will be located across the state and connected via Zoom. Each extension office listed will have the Zoom Meeting Projected and a light lunch provided. Farmers will be able to ask real time questions and engage with other farmers. **PLEASE REGISTER BY FRIDAY JULY 26th.**

### July 29<sup>th</sup>-

Lewis County Cooperative Extension Office  
St Lawrence County Cooperative Extension Office  
Clinton County Cooperative Extension Office  
Onondaga County- Farm Credit East, One Technology Pl, Homer, NY 13077  
Orleans County Cooperative Extension Office  
Yates County Cooperative Extension Office  
Schoharie County Cooperative Extension Office  
Chemung County Cooperative Extension Office  
Herkimer County Cooperative Extension Office

### July 30<sup>th</sup>-

Jefferson County Cooperative Extension Office  
Essex County Cooperative Extension Office  
Franklin County Cooperative Extension  
Cortland County- Dryden Fire Hall, 26 North St, Dryden, NY 13053  
Wayne County Cooperative Extension Office  
Livingston County Cooperative Extension Office  
Chenango County Cooperative Extension Office  
Tioga County Cooperative Extension Office  
Saratoga County Cooperative Extension Office  
Fulton/Montgomery Cooperative Extension Office  
Madison County Cooperative Extension Office



### Registration Link:

<https://forms.gle/duASeZ35oqP1e28M9>

### Recording of this will be made available on July 31<sup>st</sup>.

10:00-10:15- **MARY-KATE WHEELER** *Introduction to the New Rules: Overview, deadlines, and dates.*  
10:15-11:00- **RICHARD STUP** *Resources Available from Extension: How to use reviewed case studies.*  
11:00-11:30- **KELSEY O'SHEA** *Legal Concerns: Compliance, implications, and risks.*  
11:30-12:00- Lunch/Break  
12:00-12:30- **LIBBY EIHOLZER** *Outside Materials: Other agencies resources, risks and concerns.*  
12:30-1:00- **NICOLE TOMMELL** *Closing Remarks: Summarizing action items, updates on other labor research.*

*The North Country Regional Ag Team is a Cornell Cooperative Extension partnership between Cornell University and the CCE Associations in Jefferson, Lewis, St. Lawrence, Franklin, Clinton, and Essex counties.*

Cornell Cooperative Extension is an employer and educator recognized for valuing AA/EEO, Protected Veterans, and Individuals with Disabilities and provides equal program and employment opportunities.