

[swnyteam@cornell.edu](mailto:swnyteam@cornell.edu)

# Cornell Cooperative Extension

Southwest NY Dairy, Livestock and Field Crops Program

[swnydlfc.cce.cornell.edu](mailto:swnydlfc.cce.cornell.edu)



A partnership between Cornell University  
and the CCE Associations in these five counties:  
Allegany, Cattaraugus, Chautauqua, Erie, and Steuben.

**Quarterly Report**  
**January - March 2021**

## Programming Highlights

### CCE Dairy Specialists Successfully Deliver “Critical Calf Care” Series

Dairy calves experience many challenges during the first 6-8 weeks of life, and it is notably one of the most vulnerable time periods during the animal's life. While many producers have implemented excellent housing, bedding, and nutrition protocols, one area that proves to remain a challenge for New York dairy producers is decision making during critical periods in the pre-weaned calf's life. In recognizing this area of

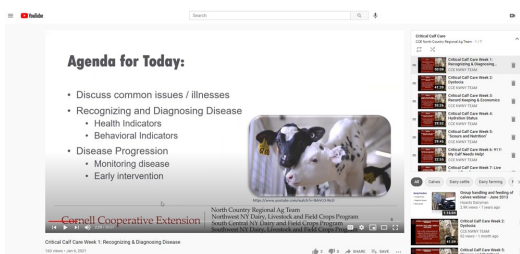
opportunity, CCE Dairy Specialists Betsy Hicks (South Central NY), Margaret Quaassdorff (Northwest NY), Alycia Drwencke (Southwest NY), and Casey Havekes (Northern NY) developed a series of webinars to help producers develop the skills and confidence to make decisions during urgent cases.

The series focused on the following topics: disease diagnosis and recognition, dystocia, record keeping, hydration therapy, scours and total calories, and euthanasia decision making. In response to the final session on euthanasia, one participant said, “Another great workshop on a very difficult topic! I am glad I have attended all of these in this series. I have learned a ton! Thank-you.” When asked if participants plan to make any changes to their calf management protocols after attending the sessions, one participant said, “We will plan to have a discussion with our heifer raiser to see if we can have special focus paid to calves that had hard births or just are lethargic...”, and another participant said, “Yes, will adjust colostrum thawing temperature and tube calves that do not drink.”

Overall, the series was well attended with anywhere from 30-61 people joining each session. Each webinar was recorded and posted to YouTube for future use – an aspect that proves to be important as the recordings have been viewed up 163 times. Several participants commented on their satisfaction with the program format. One participant said, “I do like the smaller segments of calf

care. With past programs, it was sometimes hard to digest and remember all the info”, and another participant said, “Great job! I love the idea of having a series like this.....short webinars on different topics! Excellent!”

This series is an excellent example of the collaboration that exists between Regional Ag Teams across the state. In joining our efforts, we were able to showcase individual skills and develop a very strong program tailored to the needs of calf raisers across NYS and beyond.



**Katelyn Walley-Stoll**  
716-640-0522  
[kaw249@cornell.edu](mailto:kaw249@cornell.edu)



**Joshua Putman**  
716-490-5572  
[jap473@cornell.edu](mailto:jap473@cornell.edu)



**Alycia Drwencke**  
517-416-0386  
[amd453@cornell.edu](mailto:amd453@cornell.edu)



**Amy Barkley**  
716-640-0844  
[amb544@cornell.edu](mailto:amb544@cornell.edu)



Alycia wrapped up 5 successful Dairy Advancement Program projects in the first quarter of 2021. 2 farms received funding for business planning and 3 farms were awarded record keeping funds. These funds allow producers to make updates to their operation with minimal out of pocket cost.

# 312

**Farm Consultations**  
on topics related to Farm Business Management, Field Crops, Dairy Management, and Livestock Production.

Josh continues to work with Dr. Lynn Sosnoskie to evaluate marehail for resistance. Of the 30 populations submitted for testing from across the state, it appears that 27 are tolerant to Roundup. We also suspect resistance to Gramoxone in 4 of these populations. Research will be conducted on Palmer amaranth and marehail in SWNY this year.



## Programming and Presentations

- CORE Pesticide Training 1/12 & 1/14
- Financial Management Basics via Annie's Project 2/8
- Dairy Forward Grant Webinar 2/24
- CCE Flock Talks - 2/24
- Spring 2021 Pasture Management Series - 2/25, 3/4, 3/11, 3/18
- Steuben Crop Symposium - 3/9
- Cornell An Sci 1105 Presentation - 3/16 & 3/18
- Southwest NY Field Crop Series - 1/19 - 1/21
- Critical Calf Care Series - 1/5—2/16
- Dairy Grazing Series - 3/2 - 4/6
- Continue to release regular Press Releases (9), Quick Points Updates, Weekly Update Newsletters (12), Dairy Market Watch (3), and Field Crops Chronicles to keep our producers, stakeholders, and community members aware of our programming and support resources.

# 2,332

Event and program direct participants who've attended one of our 31 events/ collaborations or have received our direct email/mail updates.

Katelyn worked with other Farm Business Management Specialists across the state to present an open webinar on the "Dairy Forward" grant program. There were several successful applications from our region that will help producers improve their farm's long term stability.

Josh and Amy hosted a Spring 2021 Pasture Management Series, which drew in 34 unique registrants, with 11 individuals taking at least two of the four classes. The two most popular classes were Weed ID & Management and Frost Seeding.

Special guest Timothy X. Terry shared an engaging sub lecture during the Grazing System Design class on water system design and management.

As part of the grant, "Developing a Beginning Farmer Training Program for Western New York's Minority and Low-Resource Farmers", Amy is developing beginning farmer programming with the Providence Farm Collective centered around broiler production, but also including meat goats, hogs, honeybees, and specialty mushrooms.



# 127

Website submissions and Facebook posts providing timely information to a large audience.

