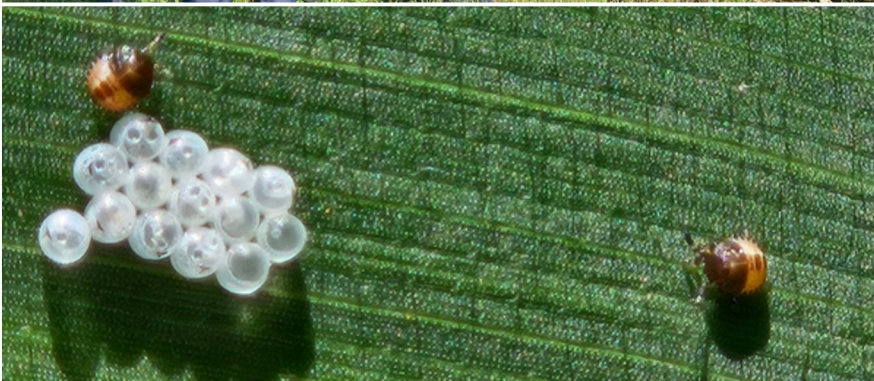


Swine 101

The Swine 101 course, a collaborative effort between CCE, the National Pork Board, and NY Pork producers, was a resounding success. Held in Herkimer County on September 25th, the event attracted an enthusiastic crowd of 27 participants eager to learn about the swine industry. The comprehensive curriculum covered a wide range of essential topics, including swine marketing, understanding the Pork Check Off Program, biosecurity and foreign animal disease, health management, and parasite management.

Attendees had the opportunity to engage with industry experts, ask questions, and gain valuable insights into the latest advancements in swine production. The success of the Swine 101 course underscores the ongoing need for educational programs that support the growth and sustainability of the pork industry in New York.



**Field Crop and Vegetable IPM
on Plain Community Farms**

Field Crop Specialist Erik Smith co-hosted this event with ENYCHP regional vegetable specialist Crystal Stewart-Courtens for one of the Plain communities in our area. Attendees earned 2.0 DEC recertification credits while hearing the latest management strategies for weeds, diseases and insect pests of their corn, small grains, vegetables, and forage crops. Because these events are held at working farms during the growing season, attendees see how to manage production issues as they arise.

Corn Dry-Down Day

Corn silage can represent more than 50% of a dairy cow's diet, directly affecting milk production on some farms. Farms have just one opportunity every year to plan ahead for next year's feed inventory. Corn needs a certain percentage of moisture to ferment and produce a high-quality silage.

Harvesting at an appropriate dry matter level (DM) is the most important factor in minimizing corn silage losses.

Corn losses are difficult to estimate, but some studies suggest that harvesting corn at 40% DM or greater can result in a decreased milk yield of 4.4 lbs per cow per day. On the other hand, if corn silage is too wet (less than 30% DM), some studies show that it can reduce milk production by almost 2 lbs per cow per day. For every 3,000 dairy cows, a 4.4 lbs loss would represent 13,200 lbs of milk per day, translating to an economic loss of \$981,000 dollars per year at a price of \$22.80 cwt.

The CNYDLFC team organized this Dry-Down event for farmers to bring corn samples and have them tested for moisture, starch, and protein content using NIR spectroscopy with the help of Cornell PRO-DAIRY.

The team processed 89 samples from different farms in our region, who were given an estimated harvest date to aim for their ideal balance of yield and DM.



Grant-Funded Research

The Beef with Dung Beetles and Biting Flies

Ashley, Daniela, and Erik are working with NYSIPM and the University of Vermont on a study of dung beetle and biting fly populations on beef farms. This work will help local producers manage biting flies while maintaining populations of beneficial insects like dung beetles.

Precision Feeding for Grass Fed Beef

Ashley and Erik are continuing to work on this NYFVI-funded project that seeks to better equip grass-fed beef producers to manage the quality of their pastures and stored forage. NYFVI was delayed in funding projects awarded the year we began this grant, so details on reporting benchmarks and producer meetings have been delayed and the grant will now be complete in the spring of 2025.

Seedcorn Maggot Population Dynamics and Seed Treatment Efficacy

With the ban of neonicotinoid insecticide seed treatments set to take effect on corn, soy, and grain crops in 2029, Erik has been heavily involved in Cornell's efforts to assess the threat that various insect pests pose to our field crops, and to identify viable alternative pest management strategies. Seed treatment trials were conducted in 5 fields around our region this year, and final yield data was collected prior to silage harvest. Through this fall, Erik will continue to monitor seedcorn maggot populations via sticky card traps at one field location. Erik is also heavily involved with planning the next phase of this work, to be conducted on at least 10 farms in our region for the next 3 years.

A program and funding partnership between Cornell University, Cornell Cooperative Extension and the Cornell Cooperative Extension Associations of Chenango, Fulton, Herkimer, Madison, Montgomery, Otsego, Saratoga and Schoharie Counties.

Central NY Field Crop Update

From late April through the first week of October, Erik is sharing his weekly Central NY Field Crop Update email newsletter to subscribed producers and stakeholders (>1,800). Each week Erik shares his field notes, providing timely information on field conditions, and the status of pests, diseases, and weeds, as well as timely harvest forecasting and weather information. During the latter part of summer, the focus of the newsletter shifts to corn silage and helping farmers use Growing Degree Day units to predict when their fields might be ready for harvest.

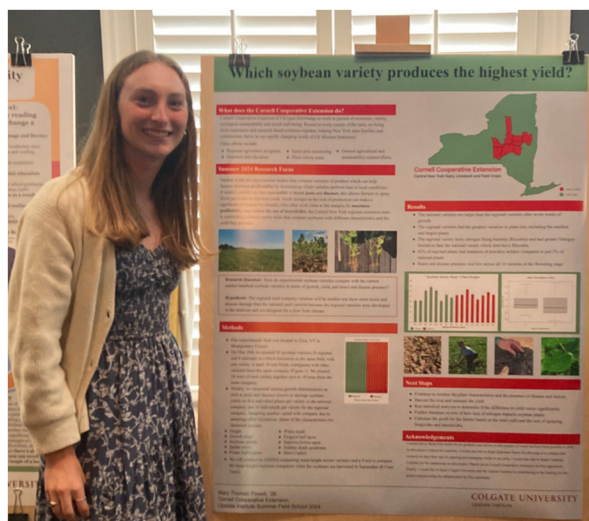
Time to make plans (35% DM anywhere between 5 – 11 days from now, depending on maturity)
 Gas up the harvester and the trucks (35% DM in 2 – 6 days, depending on maturity)
 See you in the field (35% DM in less than a week):
 It's either already in the bunk or it's going for high-moisture corn or it's going in the bin for grain (DM likely > 35-40%)

As of: 11 Sept 2024 (Base: 86/50)			Planting Date				Silking Date				
Location	Elevation (ft)	Latitude N	May 1	May 10	May 20	May 30	July 14	July 18	July 22	July 26	July 30
Poland	675	43.23	2125	2051	1957	1797	990	899	833	756	679
Canastota	420	43.08	2356	2265	2147	1973	Past	997	927	839	760
Saratoga Springs	365	43.08	2334	2247	2140	1962	Past	999	926	839	753
Frankfort	530	43.05	2342	2257	2148	1947	Past	993	921	836	753
Galway	749	43.02	2226	2143	2040	1872	1036	939	871	791	709
St Johnsville	650	43	2153	2073	1978	1813	989	895	829	754	676
Fenner	1480	42.97	2094	2019	1929	1777	987	892	827	749	671
Fultonville	489	42.95	2289	2201	2095	1920	1048	950	879	798	714
Bouckville	1170	42.95	2095	2018	1930	1777	981	886	822	745	672
Richfield Springs	1580	42.85	2031	1956	1873	1719	943	851	790	718	646
Cherry Valley	758	42.81	1995	1923	1842	1689	923	833	773	701	630
Burlington	1959	42.72	1911	1837	1763	1623	894	808	751	683	618
Sherburne	1115	42.69	2147	2062	1972	1808	998	903	837	763	691
Cobleskill	937	42.68	2161	2077	1984	1821	1003	909	845	769	692
Oneonta	1107	42.47	1872	1898	1730	1593	881	795	740	673	613
Oxford	1499	42.4	1869	1796	1726	1591	883	798	742	676	611
Bainbridge	1000	42.3	1983	1902	1828	1683	934	843	782	711	645

This Growing Degree Day table comes from the September 12, 2024 edition of the Field Crop Update. Corn silage harvest is beginning for many producers in our region.

High-Oleic and Food-Grade Soybean Variety Trials

In a partnership with a regional seed company from the midwest, Erik is facilitating a soybean variety trial at an area farm. While the seed company is only interested in yield data, our Colgate intern, Mary Thomas, tracked growth metrics and pest/disease data of their 8 varieties (along with 8 varieties from a national standard seed brand) in order to get a better picture of why certain varieties might eventually yield better than others. Harvest is expected to take place mid-October, but Mary Thomas was able to share her preliminary results at the Upstate Institute poster session in Hamilton on July 25th.



CNYDLFC were fortunate to have two outstanding interns this summer. Samantha Thompson (Iowa State, left) and Mary Thomas Powell (Colgate, right) were all-star additions to our regional team. Thank you both for helping our producers, and best of luck with your studies!

Cornell Cooperative Extension is an employer and educator recognized for valuing AA/EEO, Protected Veterans, and Individuals with Disabilities and provides equal program and employment opportunities.

Other Educational Activities: July - September 2024

- Ashley has been working with statewide groups to formulate pork supply plans if/ when ASF (African swine fever) hits the US.
- Ashley and Daniela participated in the NY State Fair at the livestock Birthing Center
- Daniela organized a Calving Workshop focused on addressing dystocia at calving.
- Daniela provided training on milk quality and milking routines in different dairy farms.
- Daniela contributed to a monthly podcast with regional specialists statewide
- Daniela presented on Hypocalcemia on the Fresh Cow Disease Webinar Series.
- Erik was invited to adjudicate the Field Crop/Agronomy station at the NY State 4H Dairy Quiz at the State Fair in Syracuse.
- Erik was an invited speaker at an equine feed and nutrition event in South Minden, NY, sponsored by DAC Vitamins and Minerals. Erik presented on pasture/hay production management and weed control.

Future Grant and Project Activities:

- The team will continue work on our grant-funded project investigating forage quality and finishing metrics in beef.
- Ashley will be organizing and leading a hands-on Integrated Parasite Management training for small ruminants.
- Ashley will also lead a workshop for beef cattle producers with a newly purchased injection simulator. The injection simulator was purchased by the NYS Beef council to help demonstrate the proper techniques of giving injections. We are eager to be able to utilize this technology in our region.
- Along with CCE Madison, Ashley and Daniela will be organizing an emergency preparedness workshop for large animal rescues.
- Daniela will be holding a “Feeder School” program in Herkimer and Saratoga counties.
- Daniela is also planning a Milk Quality workshop in the near future.
- Daniela is also currently finalizing plans for Dairy Day in January 2025
- Erik is guest-lecturing a Careers in Agriculture class at SUNY Cobleskill on October 10th.
- Erik is planning the annual Corn Day event, to be held at two locations. While details are not yet confirmed, we are hoping to hold this event on January 14th and 15th, 2025.
- This winter, Erik will host Integrated Pest Management meetings for growers in each of the region’s CCE offices (1-2 DEC credits, dates TBA in February or March).

**Daniela Gonzalez
Carranza, MPS**

Dairy Specialist
Phone: 315-749-3486
Email: dg647@cornell.edu

**Ashley McFarland,
PAS**

Livestock Specialist
Phone: 315-604-2156
Email: am2876@cornell.edu

Erik Smith, Ph.D.

Field Crops Specialist
Team Leader
Phone: 315-219-7786
Email: eas56@cornell.edu

**Website: cnydfc.cce.cornell.edu
Facebook Page: facebook.com/cnydfc
Join our E-mail list: <http://eepurl.com/hh3vBj>**
