



A partnership between Cornell University & the
CCE Associations of Allegany, Cattaraugus,
Chautauqua, Erie, & Steuben Counties.

Cornell Cooperative Extension | Southwest New York Dairy, Livestock & Field Crops Program

2025 4th Quarter Report

October 2025 - December 2025

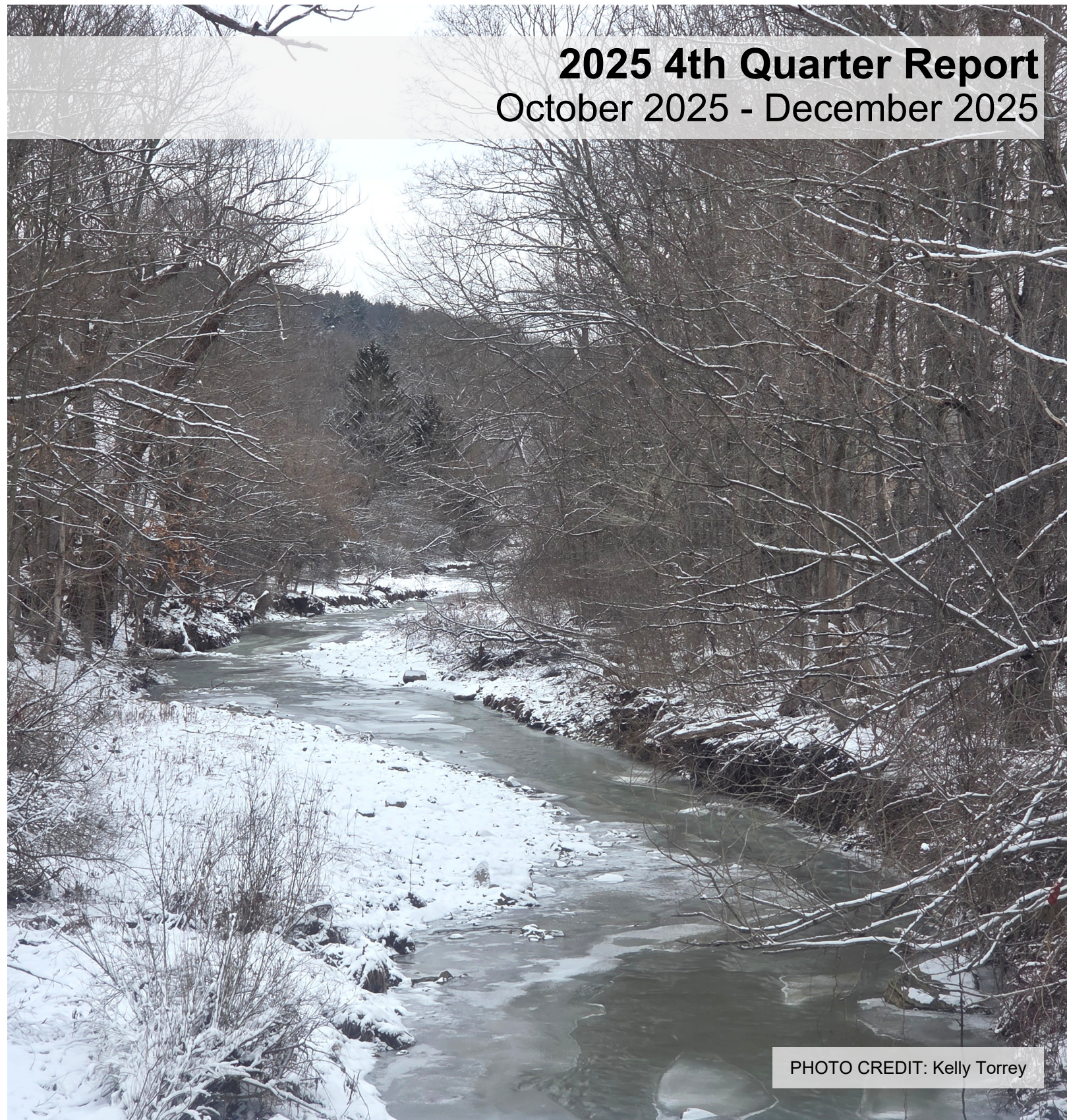


PHOTO CREDIT: Kelly Torrey

Calf Care & Calving Management

Katie conducted hands-on, on-farm trainings at large dairies focused on calf care and calving management. She led tube-feeding trainings for Spanish-speaking employees using a simulator model and live calves, provided Standard Operating Procedures, and supported bilingual communication between farm owners and staff. In collaboration with herd veterinarians, she also facilitated calving trainings using the “Birtha” dystocia model to help employees recognize normal births and safely intervene when needed.



Seeds to Success Program

Kate participated with CCE statewide educators in the first cohort of the Farm Business Management (FBM)-focused Seeds to Success Program, funded by Northeast Sustainable Agriculture Research and Education. Seeds to Success is an ag education professional development program designed to give agriculture educators from CCE the tools, knowledge, and connections they need to better support farmers with business planning. Through a mix of in-person sessions, on-farm learning, and interactive online workshops, Kate gained expertise in topics such as holistic farm planning strategies, workforce development, farm business management, accounting, access to capital, and marketing.



Herbicide Resistant Weeds

Herbicide resistant weeds are a management challenge that farmers are regularly facing. Through our team's campus connections, we can offer screening support, improving our understanding of what herbicide mode of action groups may not still be effective in troublesome weed populations. This fall, multiple species of weeds from our region were sent to campus to be screened for resistance, including tall waterhemp and marehail.



Fecal Egg Count Workshops

As part of our team's continuing efforts to reach more producers about integrated pest management in sheep and goats, we hosted a series of fecal egg count mobile workshops in each of our counties. Producers collected, prepared, and evaluated samples through a McMaster Fecal Egg Count procedure taught by Amy and John. We also taught how these evaluations should be interpreted to be used in treatment, management, and breeding decisions. In addition to performing the evaluations, farmers were encouraged to share how they approached internal parasite challenges in their animals for a peer-to-peer learning experience. The feedback from our workshops was very positive, with several participants connecting with Amy afterwards to help interpret fecal egg test results from testing they performed on their own herds and flocks using what they'd learned in the workshop.



Thank you for the continued support of our newsletter sponsors!

We continue to receive extremely positive feedback about our printed/mailed monthly editions of “Cows, Crops & Critters”. We couldn't do it without the advertising that helps us offset our costs. Our sponsors include: Country Crossroads Feed & Seed LLC, Ernst Seeds, Fertrell, Growmark FS LLC, NY FarmNet, Pavlock and Son's Construction, VM Agritech, and Wild Acres Family Farm.

Allegany County Highlights from SWNYDLFC

Amy was invited to teach Beef Quality Assurance principles to production-minded students at Alfred State College. The training shared how handling and managing cattle impacts quality of the meat and the farm's bottom line. Following the classroom portion, students moved into the teaching barn, where they gained experience in moving cattle through the chute and performing a proper injection technique on both an injection simulation model, borrowed from the NY Beef Council, and live animals. Thirteen students were BQA certified as a result of this class, showing their commitment to the industry.



Tar spot, a leaf disease of corn, continues to be a continuing conversation in the agronomy space. This growing season, due to our lack of moisture, many areas did not experience pressure from this disease. However, river bottom areas, such as along the Genesee River, did experience disease pressure because of the continued leaf wetness that occurs, mostly as a result of fog. Connections with industry allow for seamless reporting of this disease, along with others.

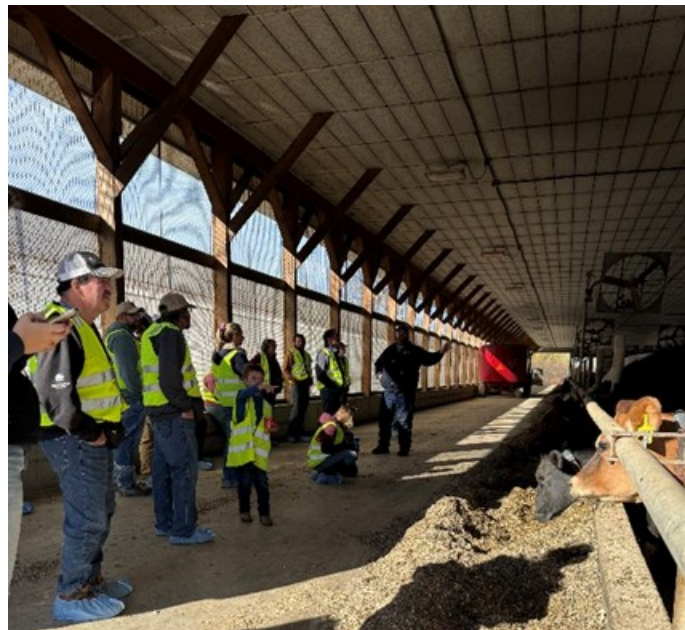


Kate represented the SWNYDLFC team at CCE Allegany's annual meeting in Cuba, NY and gave attendees an overview of what the team does and services available.

She also had the opportunity to attend the Dairy Systems and Technology showcase, hosted by Katie Callero and PRO-DAIRY. Through engagement with the hosts and farmer participants, Kate gained firsthand insight into farmer considerations for implementing technology modernization in dairy systems — at the production level with robotics and at the post-production level at a local creamery.



Katie collaborated with Pro-Dairy to host a Dairy Systems and Technology showcase. Participants were able to see a functioning dairy creamery and robotic dairy. Both facilities were recently built and allowed farmers to see the modernization of technology within the industry. The event provided farmers with space to discuss the possible implementation of these technologies on their own farms, openly sharing both the benefits and the challenges the technology may present.



Cornell Cooperative Extension Allegany County - Agriculture Staff

5435 County Road 48

Belmont, NY 14813

585-268-7644

Laura Hunsberger
Executive Director
lkh47@cornell.edu

Lynn Bliven
Ag & Natural Resources Issue Leader
lao3@cornell.edu

Cristian Acosta
Ag Educator & Master Gardener Coordinator
cfa34@cornell.edu

Alyssa Dean
Farm to School Educator
ald243@cornell.edu

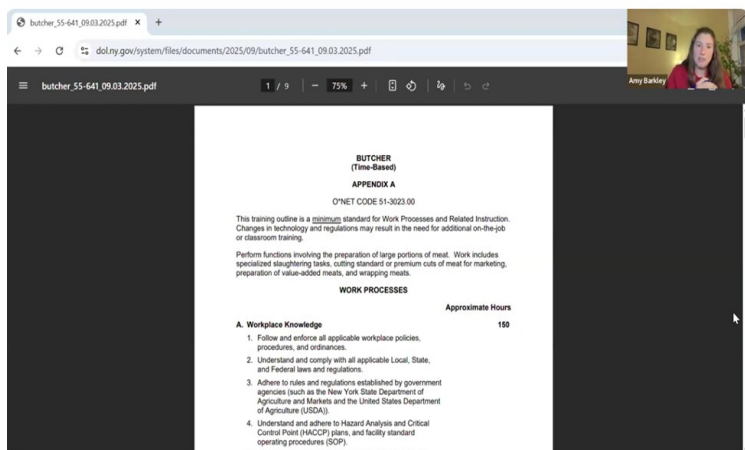
Kelly Torrey
Administrative Assistant
klb288@cornell.edu

Cattaraugus County Highlights from SWNYDLFC

On September 6, 2025, “Butcher” became the newest agriculture trade in the NYS Department of Labor’s list of approved trades. To advertise this achievement and to provide potential butcher shops and interested individuals with more in-depth information about the program, our team and Southern Tier West hosted a webinar in October. The recording of this program can be found at:

<https://www.youtube.com/watch?v=cEdmmMJy1yk&t=1s>

Our team continues to guide interested parties towards considering this opportunity.



Butcher Apprenticeship Open Forum: October 3, 2025

Katie held an on-farm calving training for a large dairy in collaboration with the herd’s veterinarian. The calving training used a statewide educational model, affectionately named Birtha, to help participants practice assisting a cow in labor. We covered what a normal birth looks like and when to intervene during a calving. The model was then used to simulate different birthing positions and participants took turns trying to correct them to a safe birthing position.



High moisture corn is a home-grown forage that has a place in many dairy rations. This year, our weather caused inconsistencies in many corn acres drying down, creating additional challenges to harvesting quality forage. Katelyn provided support to local farmers on best management practices, strategies to manage varying moisture contents, storage options, and harvest management.



Kate became a certified Project Facilitator for the Annie’s Project. Annie’s Project is a national educational program dedicated to strengthening women’s roles in agricultural enterprises. In Q1 of 2026, Kate will be co-hosting a 2-part “Inspired by Annie’s Project” webinar series: Leaving your Legacy: Planning for Your Farm’s Future. “Inspired by Annie’s Project” programs, like this, are specific to local needs and assist women to develop additional skills across a range of areas, including information management, financial documentation, land ownership and leasing, marketing commodities, and educational needs.



ANNIE’S PROJECT
EMPOWERING WOMEN IN AGRICULTURE

Cornell Cooperative Extension Chautauqua County - Agriculture Staff

28 Parkside Drive

Ellicottville, NY 14731

716-699-2377

Kelly McDonald
Executive Director
kmm525@cornell.edu

Sheldon Kenyon
Farm to School Educator
smk348@cornell.edu

Kim Oudemool
Natural Resources Educator
kkr35@cornell.edu

Tamara Bacho
Administrative Assistant
tsb48@cornell.edu

Chautauqua County Highlights from SWNYDLFC

Kate attended the Dairy Systems and Technology showcase, hosted by Katie Callero of the SWNYDLFC team and by PRO-DAIRY. Through engagement with the hosts and farmer participants, Kate gained firsthand insight into farmer considerations for implementing technology modernization in dairy systems—at the production level with robotics and at the post-production level at a local creamery.



Katie collaborated with Pro-Dairy to host a Dairy Systems and Technology showcase. Participants were able to see a functioning dairy creamery and robotic dairy. Both facilities were recently built and allowed farmers to see the modernization of technology within dairy. The event provided farmers with space to discuss the possible implementation of these technologies on their own farms, openly sharing both the benefits and the challenges the technology may present.



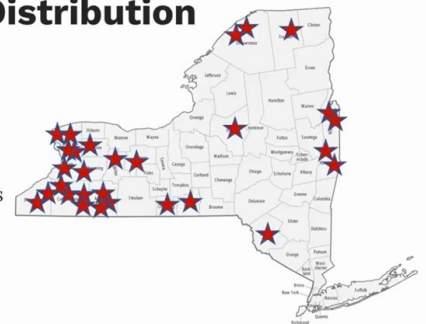
Through the help of local agriculture staff, Katelyn connected with and supported a new landowner in the county. This individual was interested in gaining more resources on grain production, market opportunities, local agribusinesses, soil sampling resources, and lease agreements.



Amy and Katelyn Walley-Stoll gave the final report on the summary of our team's three-year grant project, "Optimizing the Economic Return of Pasture Raised Slow Growth and Conventional Broilers" in November. This report includes the average production and financial numbers for farmers raising pastured broilers under the 1,000 bird exemption in NYS, and we had a handful of farmer participants from Chautauqua County. The recording of this webinar can be viewed here: <https://www.youtube.com/watch?v=t7FZi1-4Fw&t=506s>

Project Farm Distribution

- 38 total farms participated across two cohorts
- 123 flocks' worth of data
 - 97 Cornish Cross flocks
 - 26 Slow Growth flocks



Cornell Cooperative Extension | Southwest New York Dairy, Livestock & Field Crops Program

Cornell Cooperative Extension Chautauqua County - Agriculture Staff

Carnahan Center at JCC

525 Falconer Street

Jamestown, NY 14701

716-664-9502

Emily Reynolds
Executive Director
eck47@cornell.edu

Katelyn Walley-Stoll
Agriculture Team Leader
kaw249@cornell.edu

Eliza Hensel
Natural Resources Educator
emh275@cornell.edu

Sofia Russo
Agriculture Coordinator
ssr236@cornell.edu

Lucia Conti
Administrative Assistant
lpc33@cornell.edu

Erie County Highlights from SWNYDLFC

In October, Kate represented CCE at the Erie County Farm Bureau annual meeting along with SWNYDLFC team member, Katelyn Miller.

She has also become a certified Project Facilitator for the Annie's Project. Annie's Project is a national educational program dedicated to strengthening women's roles in agricultural enterprises. In Q1 of 2026, Kate will be co-hosting a 2-part "Inspired by Annie's Project" webinar series: Leaving your Legacy: Planning for Your Farm's Future. "Inspired by Annie's Project" programs, like this, are specific to local needs and assist women to develop additional skills across a range of areas, including information management, financial documentation, land ownership and leasing, marketing commodities, and educational needs.



ANNIE'S PROJECT
EMPOWERING WOMEN IN AGRICULTURE

Nearly 30 participants joined Jean Bonhotal from the Cornell Waste Management Institute, NRCS, Soil and Water, WNY Crop Management, Pro-Dairy, and CCE to learn about the new animal mortality composting site at Philips Family Farm, Inc. in North Collins. We shared the funding available for this kind of project, how the pad is designed to capture runoff and nutrients, and how constructing/maintaining the pile impacts the rate and completeness of the composting process.



Katie visited a large dairy in Erie County and held an on-farm training for tube-feeding calves in collaboration with their herd veterinarian. After the training was finished, Katie assisted with language translation to facilitate discussion between farm owners and Spanish-speaking laborers about standard operating procedures around the calf barn.



Katelyn continues to build strong relationships with local agribusinesses, one of which is a lime enterprise. Their relationship allows for knowledge exchange both ways, with open conversations around educational gaps in soil pH and lime topics, driving future research, and discussions around upcoming reporting changes for the industry around greenhouse gas emissions.



Cornell Cooperative Extension Erie County - Agriculture Staff

21 South Grove Street

East Aurora, NY 14052

716-652-5400

Diane Held

Executive Director
dbh24@cornell.edu

Sharon Bachman

Ag & Natural Resources Educator
sin2@cornell.edu

Bari Zeiger

Regional Navigator: Farmland for a New Generation NY
bz93@cornell.edu

Jolie Hibit

Administrative Assistant
jah663@cornell.edu

Steuben County Highlights from SWNYDLFC

Mugwort is a complicated weed to eradicate, as it spreads by rhizomes underground. Katelyn has provided support to a local hay farmer for controlling this weed, providing chemical and physical control recommendations. There is little public information available for control in this setting, so this consultation will be ongoing into the spring as they reconnect to determine what strategies were effective, which can be used to help more farmers.



Photo credit: University of Connecticut, UCONN Extension

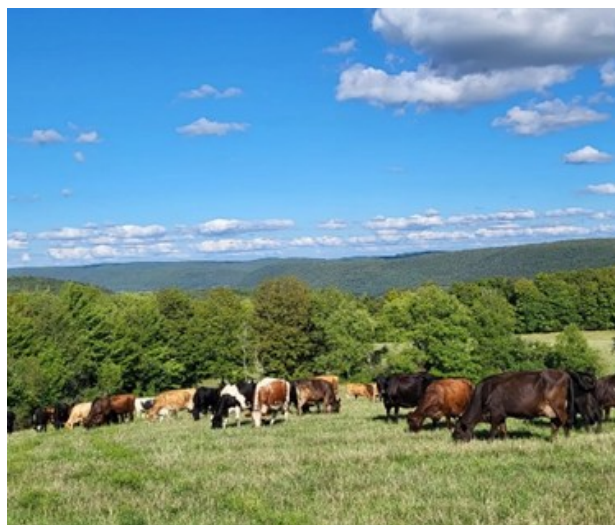
Our team hosted a Fecal Egg Count Mobile Workshop in Bath in early November. Producers prepared and evaluated fecal samples using a McMaster Fecal Egg Count procedure taught by Amy and John. We also taught how these evaluations should be interpreted to be used in treatment, management, and breeding decisions. In addition to performing the evaluations, farmers were encouraged to share how they approached internal parasite challenges in their animals for a peer-to-peer learning experience.



Katie hosted an on-farm tube feeding training with the Spanish-speaking staff of a large local dairy farm. The employees first practiced on a calf simulator training model and then we tube fed two real calves. She provided them with a Standard Operating Procedure document that reviews what was covered in the training for them to have posted to assist staff in the future.



Kate provided feedback on a Dairy Farm Improvement & Modernization Grant proposal and wrote a letter of support for an organic dairy in Steuben County. This dairy farm seeks funding to create lasting infrastructural improvements designed for multi-purpose, holistic benefits including enhanced herd performance, increased profitability, and improved animal welfare. They aim to increase operational efficiency to reduce labor inputs, freeing up time to spend on more strategic management tasks, including responsiveness to market incentives for higher production.



Cornell Cooperative Extension Steuben County - Agriculture Staff

20 East Morris Street

Bath, NY 14810

607-664-2300

Tess McKinley
Executive Director
tsm223@cornell.edu

Susan Walker
Agriculture Educator
smw272@cornell.edu

Stephanie McKinley
Ag in the Classroom Educator
sem358@cornell.edu

Kristin Brandt
Ag in the Classroom Educator
kb579@cornell.edu

Anne Zschoche
Administrative Assistant
amz65@cornell.edu

SWNYDLFC 4th Quarter Events & Funded Projects

Events

- 10/2/25 - Butcher Trade Open Forum, virtual meeting
- 10/9/25 - Workforce Development: Virtual Butcher Trade Presentation for Ag & Markets
- 10/21/25 - FEC Workshop, East Aurora
- 10/22/25 - BQA at Alfred State College
- 10/30/25 - FEC Workshop, Jamestown
- 11/4/25 - FEC Workshop, Ellicottville
- 11/4/25 - Dairy Systems & Tech Showcase, S. Dayton
- 11/6/25 - FEC Workshop, Bath
- 11/6/25 - Mortality Composting Demo, North Collins
- 11/13/25 - Broiler Project final webinar
- 11/20/25 - NERME presentation at CCE In-Service
- 11/25/25 - Small Farms Poultry Course

Funded projects that were completed or worked on this quarter:

- **NERME:** Creating Active-Learning, Grab n' Go Pesticide Safety Education Modules and Toolkits
- **NYSDAM:** 2025-2026 Integrated Pest Management (Bioeconomy) - Neonicotinoids Implementation
- **NERME:** Improving Production Outcomes and Reducing Parasite Resistance in Small Ruminants in Southwest New York Using Targeted Deworming Strategies
- **SARE:** Optimizing the Economic Return of Pasture-Raised Slow-growth and Conventional Broilers
- **BFRDP:** Empowering Refugee, Immigrant and Black Beginning Farmers through Personalized, Culturally Adapted Training & Education at PFC
- **NEDBIC:** Northeast Regional Dairy Grazing Apprenticeship Program

4th QUARTER 2025 BY THE NUMBERS

238

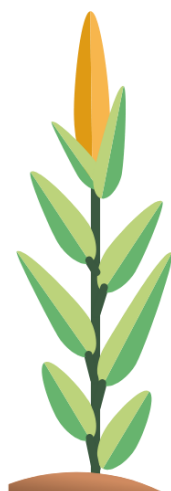
Farm Consultations on topics related to Farm Business Management, Field Crops, Dairy Management, and Livestock Production.

1,218

Event and program direct participants who've attended one of our 16 events/ collaborations or have received our direct email/ mail updates.

91

Website submissions, press releases, interviews, and Facebook posts providing timely information to a large audience of more than 20,000 indirects.



COWS CROPS & CRITTERS



Amy Barkley

*Team Leader &
Livestock
Management
Specialist*

716-640-0844
amb544@cornell.edu



Beef, Sheep, Goat and Poultry Production
Product Marketing
Meat and Egg Safety and Quality
Livestock Pasture and Grazing Support
Livestock Health and Welfare
SWNYDLFC Leadership and Outreach

Katelyn Miller

*Field Crops &
Forage
Specialist*

716-640-2047
km753@cornell.edu



Soil, Water and Nutrient Management
Forage and Grain Production
Variety Selection
Soil Analysis and Fertility Recommendations
Pest and Disease Management
Field Trials and Troubleshooting

Kelly Torrey

*Administrative
Assistant*

585-268-7644
klb288@cornell.edu



Communications and Outreach
Event Coordination
Database Management
Program Development
Advertising Point of Contact
Financial Processing

Katie Callero

*Dairy Management
Specialist*

607-422-6788
krc85@cornell.edu



Calf and Heifer Management
Dairy Records Analysis
Herd Health and Troubleshooting
Dairy Cattle Pasture and Grazing Support
Animal Nutrition and Reproductive Management
Automated Milking Systems and Farm Technology

Kate McDonald Polakiewicz

*Farm Business
Management
Specialist*

716-640-0522
kem348@cornell.edu



Farm Financial Analysis and Industry Benchmarking
Beginning Farmer Guidance
Farm Specific Business Planning
Risk Management
Production Economics
Market Analysis

John Pirrung

*Research
Technician*

jap448@cornell.edu



In-Field Data Collection
Sample Preparation
Data Analysis
Lesson Plan Co-Development
Teaching Support