

Educational Activities



Dr. Russ Hahn from Cornell University discusses weed control options in corn

2013 Corn Day

Corn is an important crop for our area and for the state. The combined value of both corn grain and corn silage produced in the seven counties covered by our team is at \$75 million. From feed to ethanol it is a crop that is in high demand and growers are looking for information that can lead to higher profitability. One hundred thirty six people participated in this year's Corn Day coming from 12 counties and 2 other states with 77 people receiving DEC recertification credits and 12 Certified Crop

Advisors receiving CUEs for the session. Topics this year included setting up a corn planter so that the seed is more accurately placed to the proper depth, and insect and weed control. (Ganoë)

2013 Dairy Day

The Dairy Day continues to provide a venue for the local dairy industry to gather as over 88 people and 16 vendors participated. The 2013 program emphasized various ways dairy producers could maintain profitability with the current high feed costs. The availability of whey from local dairy processors has producers looking at how it might be used as feed source. Two nutritionists who work with farms feeding whey were able to address how best to utilize this product. (Balbian)



Panel moderator Dr. Larry Chase from Cornell and Harry Bristol from Lutz Feeds discuss the feed use of whey.



Regional Field Crop Specialist Kevin Ganoë gives options for corn rootworm control.

Field Crop Pest Management Meetings

These meetings are held each winter at the six extension office in the regions. The meetings emphasize field crop pest issues identified in the 2012 growing season and provides insights as to how crop growers should handle those pests in the future. One hundred thirty one people attended. (Ganoë)



CCE Regional Dairy Management Specialist David Balbian talks bunk silo management.

Putting Your Feeding Program to Work

Over 60 people participated in these workshops held on-farm at six locations through the region. Coordinated with the nutritionist at each host farm the workshops emphasized factors that affect a farm’s ability to deliver the quantity and quality of feed needed from the silo to the feed bunk. The ability to see what each farm was doing and to interact as part of a small group made these meetings very effective. (Balbian)

Winter Dairy Management Schools

The Winter Dairy Management Schools are a state wide effort to pool resources and speakers to address current issues in dairy production. Two schools were held in the team region with 100 people attending. This year’s theme, *Managing Your Dairy for Resiliency* emphasized the modernization of dairy facilities and in particular cow comfort. (Balbian)



Dr. Jerry Bertoldo reviews the economics of dairy reproduction

Soybean Management Meeting

Twenty local soybean growers met to discuss management practices and weed control. The team has offered a scouting program the past three years and part of the discussion centered on what the scouting program will look like for the 2013 growing season. (Ganoe)

Current Projects and Grants

National Fish and Wildlife Foundation (NFWF) Precision Feed Management and Corn Nitrogen Management Grants

The team held meetings this winter with grant participants to go over their feed management benchmarks and the results of Corn Stalk Nitrate Tests from the past year. The use of these benchmarks point out where farms have an opportunity to increase the amount of homegrown forages and decrease the protein and phosphorous fed resulting in higher milk production, lower feed costs and less environmental risk. The Corn Stalk Nitrogen Tests indicate which corn fields had sufficient nitrogen applied for the season and which fields were short nitrogen or had too much applied. (Jerauld, Balbian, Schmidt, Ganoe)



Precision Feed Management Consultant Robin Jerauld shows how to calculate the milk fat and protein dollars in a milk check.

New York Farm Viability Institute funds testing barley varieties for malting characteristics

A new “Farm Brewery” category has been established and local breweries wishing to capitalize on that license will need to use NY grown ingredients including malted barley. Malting barley varieties used in brewing have very distinct characteristics and may not be characteristics found in currently recommended feed varieties. Most malting barley is grown in the Upper Midwest and Northwest and those growing conditions are considerably drier and more disease free than the New York. The team along with the Cornell Small Grains Project received funding from New York Farm Viability Institute to test barley varieties to find those that have the desired malting characteristics and perform well agronomically. Two trials, one in the team region and the other in the western part of the state, will look at 20 spring and 20 winter barely varieties. (Ganoe)

Emerging Issues and Individual Assistance

David is part of a planning group working to develop the details of how the Dairy Acceleration Program (DAP) will be carried out. This involves \$450,000 set aside by the Governor based on recommendations made at last summer’s Yogurt Summit. The goal of the program is to help individual dairy farmers to modernize and increase milk output. It is being administered by NY Ag & Markets and Pro-Dairy. Final details will be forthcoming. (Balbian)

Dave continues to assist dairy farms considering modernizing or building new facilities by taking them to farms that have already upgraded their facilities. (Balbian)

Speaking Opportunities:

The team worked with Fulton/Montgomery Counties educator Bonnie Peck to conduct a hands-on Forage Workshop for 4H members. Information was presented on how to judge forage quality from samples that had a corresponding forage analysis. Participants brought in their own samples to be judged (Balbian, Ganoe)



Kevin made presentations on *Common Field Crops, Cropping Systems, & Management* and *Pest Management & IPM* to forty Soil and Water Conservation District employees as part of the Basic Agronomy Training during the 2013 NYS Water Quality Symposium in Auburn. (Ganoe)

David spoke at the Chenango County Grazing Conference at the Oxford Library about supplementing dairy cattle with grain while on pasture. About 30 people attended. (Balbian)

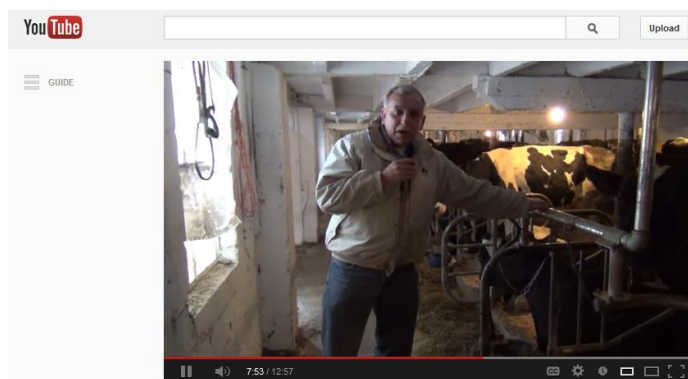
For their February meeting the Mohawk Valley Progressive Herd Group was interested in learning about how to manage and use nutrients for crop production more efficiently, especially the use of manure. Kevin presented information on nutrient management, but also fielded questions as part of an open discussion on crop production. (Balbian, Ganoe)

Public Relations

Kevin continues to serve on the Conservation Tillage Expert Panel of the Chesapeake Bay Program, Water Quality Goal Implementation Team. This group is looking to redefine how reduced tillage and no-till practices are handled in the Chesapeake Bay Model. (Ganoe)

Newsletters and Media

David spoke in a YouTube Video about the value & importance of cow comfort to productivity and profitability on dairy farms. This was part of a special project in Chenango County. (Balbian)



Next Quarter and Future Activities

Begin 1st Cutting Forage Quality Project in May (Balbian, Ganoe, Jerauld and Schmidt)

Continue Checking the Back Forty newsletter (Ganoe)

Continue with individual assistance on facilities & nutrition (Balbian)

Continue NFWF Precision Feed Management and Corn Nitrogen Management Grants (Balbian, Ganoe, Jerauld and Schmidt)

Conduct soybean scouting program for soybean producers (Ganoe)

Some effort and activities with the Dairy Acceleration Program will be taking place. Final details should be out soon. (Balbian)