

AG FOCUS



This Issue

- **Animal Care a Century Ago**
By Jodi Letham 1 & 3
- **Corn Congress 2026 - Mail-In Registration Form**
By Mike Stanyard 5
- **Winter Crop Planning for Western New York Dairy and Livestock Farms: Building a Strong Foundation for the 2026 Growing Season**
By Jodi Letham 7
- **Dairy Grant Round-Up**
By Margaret Quaassdorff 10
- **UPCOMING EVENTS** 12

Animal Care a Century Ago

Nancy Glazier

A while ago my father gave me a book that belonged to my great-grandfather. The title is, *The Farmer's Veterinarian*, by Charles William Burkett. It covers many things related to livestock health that are still applicable today. The purpose of the book was not to replace the veterinarian but to provide the farmer with enough knowledge to treat minor illnesses or injuries, and when to call the veterinarian. These are some of the relevant highlights.

Know your livestock. Start by being familiar with their health and daily needs. There is an art to observation. This includes feed and water intake and excretion. This background knowledge helps you spot changes in behavior as a sign of disease. What to watch for could be droopy ears, off feed or water, or separation from the herd or flock. Also, know how to take a temperature and know what the animal's usual temperature is.

Prevention is better than cure. This still holds true. Livestock given the opportunity to lives as closely as possible to their natural state are less stressed and more likely to stay healthy. Provide clean bedding, fresh air through ventilation (not drafts), mold-free, quality feed, and clean water are important.

Disinfection. This one surprised me. Disease is caused by germs and bacteria, so Burkett says. Frequent cleaning out of manure and spoiled feed and then disinfecting is necessary to keep livestock healthy. Slaked lime was used. Growing up I remember the barn getting whitewashed, I'm guessing with slaked lime (calcium hydroxide). Germs and bacteria were covered and killed.

Quarantine sick animals. This still is a wise practice. Disease could potentially enter a herd or flock when a sick animal is purchased, and

Cont. on page 3



NWNY STAFF



David Bechtel
Field Support Specialist

865.951.9495
db979@cornell.edu



Ashley Fazio
Administrative Assistant

Genesee County
585.343.3040 x 138 (office)
585.549.0630 (cell)
ak2367@cornell.edu



Nancy Glazier
Small Farms, Livestock

Genesee County
585.315.7746 (cell)
nig3@cornell.edu



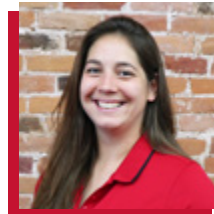
Jodi Letham
Field Crops & Soils

Livingston County
585.689.3423 (cell)
jll347@cornell.edu



John Hanchar
Farm Business

Livingston County
585.991.5438 (office)
585.233.9249 (cell)
jjh6@cornell.edu



Margaret Quaassdorff
Dairy Management

Genesee County
585.343.3040 x 133 (office)
585.405.2567 (cell)
maq27@cornell.edu



Mike Stanyard
Field Crops & IPM

Wayne County
315.331.8415 x 123 (office)
585.764.8452 (cell)
mjs88@cornell.edu

**A partnership between Cornell University and the
CCE Associations in these ten counties:**

Genesee, Livingston, Monroe, Niagara, Ontario, Orleans,
Seneca, Wayne, Wyoming & Yates

**Postmaster:
Send Address Changes to:**

NWNY Team, Attn: Ashley Fazio, 420 East Main St., Batavia, NY
14020

Direct all inquiries on advertising space/rates to: Ashley Fazio at
585-546-0630 or ak2367@cornell.edu

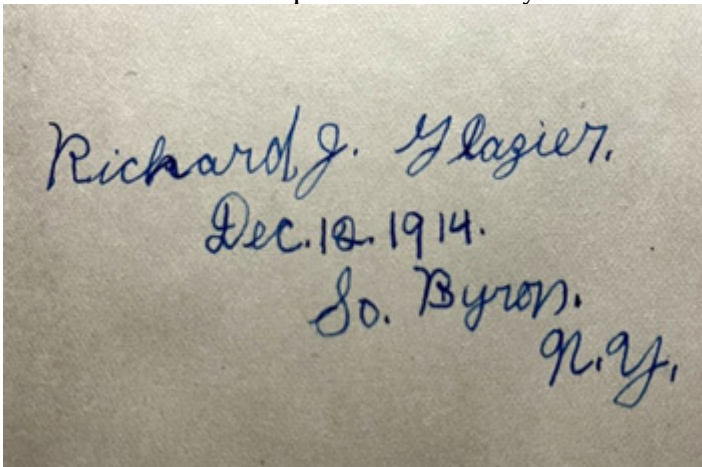
To simplify information, brand names of products may be used in this publication. No endorsement is intended, nor is criticism implied of similar products not named. Every effort has been made to provide correct, complete and up-to-date pesticide recommendations. Changes occur constantly & human errors are still possible. These recommendations are not a substitute for pesticide labeling. Please read the label before applying pesticides. For more information click here.

Animal Care a Century Ago Cont.

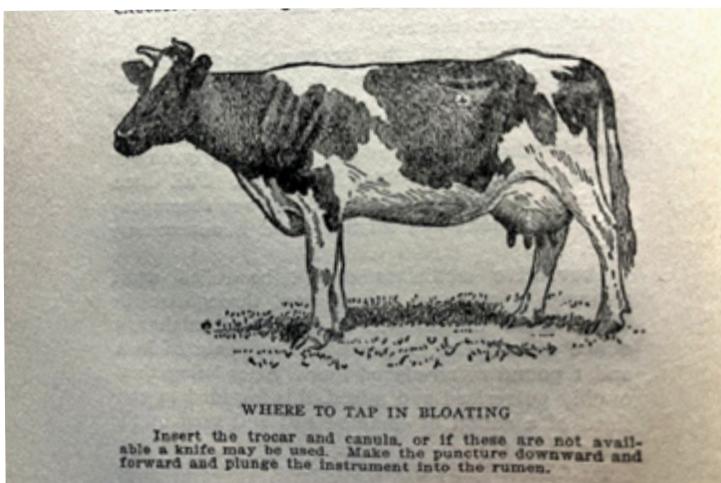
it was not quarantined. They should be away from the herd or flock as far as possible and held there long enough to know nothing strange or unusual is taking place.

Causes of disease. Most diseases are caused by mismanagement – filthy water, moldy or improper feed, bad ventilation, overwork or lack of exercise. Injuries can lead to disease. Chemical causes are poisonous materials or plants. All of these are the owner's fault., according to Burkett.

There are many diseases and treatments listed, some I wonder if the treatments highlighted were worse than the diseases. A few vaccines are mentioned as another means of preventing some diseases. What really impresses me is the concern for animal husbandry over 100 years ago. These livestock provided for the farmer and his family. Horse care was a big topic as they were critical to the operation of the farm and transport of the family.



My great-grandfather signed and dated the book.



The image highlights the location to insert a trocar and cannula to treat for bloat. There is a faint '+' in the correct location.

Check Out The NWNY Team Blog!

Features Crop Alerts, Dairy Alerts, Bilingual (Spanish) Resources, Upcoming Events: and more from our team members.

<https://blogs.cornell.edu/nwny-dairy-livestock-field-crops/>



[@CCENWNY](https://www.instagram.com/CCENWNY)



<https://www.facebook.com/NWNYTeam>



<https://www.linkedin.com/in/ashley-fazio-36a71526a/>



<https://www.youtube.com/@CCENWNY>



[To sign up, employees can text their name and farm name to \(585\) 549-0630 on WhatsApp.](https://www.whatsapp.com/text/5855490630)

Cornell Guideline Announcement

Cornell IPM has decided to pause Guideline production for 2026. They feel this is the best way to put their energy into restructuring and rejuvenating the Guidelines. Producing revised editions for 2026 while restructuring the whole Guidelines system is not possible without sacrificing quality and the long-term future of the Guidelines.

They will still offer the 2025 versions of the Guidelines through the Cornell Store. Print versions for each title will be available as long as their supply lasts. Online versions will be available for purchase until the next editions are released in 2027.

CALEDONIA DIESEL, LLC

2905 Simpson Road • Caledonia, NY 14423

585-538-4395 www.caledoniadiesel.com

OVER 325 TRUCKS AND OVER 150 PIECES OF CONSTRUCTION EQUIPMENT

\$\$\$\$\$ WE BUY MACK, FREIGHTLINER, PETE, KENWORTH, CASE, HYUNDAI, IR, Etc. CONSTRUCTION EQUIPMENT for \$\$\$\$\$

\$\$\$\$\$ WE BUY MACK, FREIGHTLINER, PETE, KENWORTH, CASE, HYUNDAI, IR, Etc. CONSTRUCTION EQUIPMENT for \$\$\$\$\$



Nice Toy Hauler
2016 INTERNATIONAL 4300 TOY HAULER CREW CAB: Cummins 325 HP Allison Auto. Trans.; 14' Flatbed Set Up For Towing; Single Axle; 25,999# GVW; 226" WB; P/W; PDL; P/M; Hands-Free Capable Bluetooth Radio; 60,351 Miles; Sk. # 6941 - **\$65,250**



2018 PETERBILT 567 Double frame cab & chassis with 20K front axle, 46K locking rear; Haulmax suspension, Cummins ISX12 engine with 425HP 230" wheelbase, 216" of frame behind the cab, 154" CT, Allison automatic transmission, and REPTD (rear engine PTO), 134,341 miles; Sk. # 7124 - **\$72,500**



John Deere 4066R tractor MFWD with 2 remotes, New 250/75R16 front tires and 44x18.00-20 rear tires, Yanmar engine with 66 HP hydrostatic transmission, and 1,160 hours, Warranty good through 2,000 hours or April 2026 - whichever comes first, 1,160hrs - **\$37,000**



2013 PETERBILT 365 CAB & CHASSIS: Double Frame, 425 HP Cummins ISX12; 8LL Manual Trans.; 18,740# F/A; 46K Full Locking Rears; Air Trac Susp.; Steerable 20K Lift Axle; 322" WB; 24'8" Frame Behind Cab; 236" CT; PTO w/Controls; Frame Sandblasted and Painted; 205,052 Miles; Sk. # 6942 - **\$61,350**



2015 MACK TITAN T0713: Mack MP10-605C 605 HP Fuller 18 speed transmission, headcack rack, 18K front 44K rears with diff. lock, air ride suspension; 222" wb, dual exhaust air cleaners, wet line. 400,130 miles; Sk. # 7082 - **\$73,500**



2015 Mack Granite GU713 Clean, double frame dump truck with 16" Ox Bodies Inc. steel body w/ 58" sides, tarp, Mack MP7-405M engine with 405 HP engine brake, 18K front axle, 44K rears, diff. lock, 14K steerable lift axle, Allison automatic transmission, Camelback suspension, 385/65R22.5 front tires and 11R24.5 rear tires, 224" wheelbase, 136" C-T, 154" of frame behind the cab. 478,177 miles, Sk. # 7128 - **\$78,900**



2006 International Paystar 5600I, Heavy spec, double frame 6X6 drywall/block truck with 24' 6" x 96" steel flatbed, Fassi P880 SE22 crane, 2 outriggers, 21K front axle and 46K rears, Hendrickson Haulmax suspension, 445/65R22.5 front tires and 12R24.5 rear tires, 288" wheelbase, 225" C-T, 29'8" of frame behind the cab, 5.38 ratio, and pintle hitch. Crane can be removed. 345,408 miles - **\$57,500**



2007 PETERBILT 378: Day cab tractor with CAT C15 475hp, 18 speed manual, 12K front axle, 46K full locking rears, 203" wheelbase, Air-trac suspension, wet line, dual air cleaners and exhaust. 539,130 miles; Sk. # 7079 - **\$59,250**



2005 Kenworth W900 Heavy single frame, Kenworth W900 cab & chassis with Cat C11 engine with 350 HP Eaton-Fuller 8L transmission, 20K front axle, 46K full locking rears, Allison automatic, 250" wb, 21' 10" of frame, 160" C-T (muffler takes 1' of these measurements) 20K front, 46K locking rear, rear engine PTO (REPTO) 187,683 miles; Sk. # 7085 - **\$52,900**



2003 International 7400, Double frame dump truck with 15" steel body, 16K front axle, 40K rears, 12K steerable lift, Allison automatic 3500 6 speed, 206" wheelbase, Tarp, pintle hitch, 274,448 miles, sk. # 6878 - **\$39,500**



1999 International Paystar 5600 Double frame day cab with 184" wheelbase, Allison HT 750 DR automatic transmission, 12,350 lb. front axle, 42,400 lb. rears, NEWAY air ride, wet line, rubber 95%, 1666,030 miles, sk. # 6745 - **\$33,250**



2016 Kenworth W900 Heavy single frame concrete mixer with Con-Tech 11CY mixer and 13K rear booster axle, 20K front axle, 46K full locking rears, 13K steerable lift, 248" wheelbase, Chalmers suspension, Eaton Fuller automatic transmission, rear engine PTO (REPTO), 4.78 ratio, Mixer can be removed, 20' 6" of frame behind the cab, 149" C-T, 19.263" chassis weight, 142,408 miles, sk. # 7091 - **\$65,500**



2006 PETERBILT 357: Double frame & chassis with Cummins ISM 350hp, Allison automatic, 250" wb, 21' 10" of frame, 160" C-T (muffler takes 1' of these measurements) 20K front, 46K locking rear, rear engine PTO (REPTO) 187,683 miles; Sk. # 7085 - **\$52,900**



2018 INTERNATIONAL WORKSTAR 7400 DOUBLE FRAMED DELIVERY TRUCK with Rot-Max 1102-23 RDB (Roll-Over Delivery Box), Cummins 350 HP, Allison Auto. Trans.; 20K F/A; 46K R/A; Haulmax Susp.; 250" WB; 182" CT; 26" Frame Behind Cab; 10'8" High/12" High w/Extensions; Sk. # 7032 - **\$65,800**



2006 MACK GRANITE CV713; Day cab Mack REMACK AI-375 engine (March 2015), 12,350 lb. front, 46K rears, camelback suspension, Allison auto trans, 216" wb, 136" C-T, 151" of frame behind the cab, wet line. **HP is currently set at 375, but can be increased to 400 HP w/ software upgrade. Engine brake can be installed for #3/500", 235,285 miles; Sk. # 7111 - **\$49,900**



2016 WESTERN STAR 4900: Clean Day Cab w/Cummins ISX15 Engine; 525 HP Eaton-Fuller 18 Spd. Trans.; 13,220 lb. F/A; 46K Full Locking Rears, AirTrac Susp.; 215" WB; Headache Rack; Dual Exhaust & Air Cleaners; 3.91 Ratio; Wet-Line Just Installed. 371,242 Miles; Sk. # 6791 - **\$69,900**



(2) 2007 MACK CHN613 DAY CAB TRACTOR: Low Mileage; 380/410 HP Mack AC, 13-Spd. Manual, 14K F/A; 44K Rears On Camelback Susp.; 210" WB; Wetline, 53K/45K/53K Miles; Sk. #6873/6872/6895 - **\$36,500**



2003 MACK RD688S; Double Frame Grain Truck w/24' Schien Equipment Aluminum Body; 6' Sides; Hosi; Roll Tarp; Barn Doors; 2 Chutes; 350 HP; 18K F/A; 44K R/A; (2) Non-steerable Lift Axles; Camelback Susp.; 315/80R22.5 Front Tires 315/80R22.5 Drive Tires; 262" WB; 178" C-T, 23'6" Frame Behind Cab; 711,782 Miles; Sk. # 7069 - **\$43,000**



2009 MACK GRANITE GU813 CAB & CHASSIS; Double Frame; Mack 395 HP; Allison Auto.; 20K F/A; 46K R/A; Air Ride Susp.; 280" WB; 20'8" Frame Behind Muffler; 174" Frame Behind Muffler To Center of Trunnion; 169,543 Miles; Sk. # 6550 - **\$58,900**



2005 INTERNATIONAL 5900; Double frame log truck 20K front, 46K full locking rears, Haulmax suspension, Pritcher 120 extended boom loader 23' bunks, rear lift axle, CUMMINS ISX 500hp ENGINE 11/2016, 18spd manual, new brakes and drums. 197,381 miles; Sk. # 7078 - **\$69,500**



2006 Mack Granite Clean, double frame flatbed truck with 226" x 96" steel deck, Mack AM-370 engine with 370 HP, Maxitorque ES 10-speed transmission, 20K front axle, 44K rears, Camelback suspension, 276" wheelbase, 198" C-T, and 23' 8" of frame behind the cab. 307,909 miles. Flatbed can be removed. Sk. #7121 - **\$39,900**



2014 PETERBILT 365 CAB & CHASSIS: TRI-DRIVE; 450 HP Cummins ISX; 18-Spd. Transmission; 20K F/A; 64K Triple Locking Rears; Air Trac Susp.; 445/65R22.5 Front, 11R24.5 Rear Tires; 278" WB; 334" Bridge; 24" Frame Behind Cab; PTO; 168,725 Miles; Sk. # 7020 - **\$57,000 EACH**



2019 JOHN DEERE 5090R: 3 Available, MFWD tractor 90hp, with low hours, new tires, 16F/16R power shuttle transmission, suspension cab, rider seat, full cab w/ heat/AC, 3 remotes. Some remaining factory warranty; 900-1200 Hrs. Sk. # 370 - **\$54,500**



2013 PETERBILT 367 DAY CAB: Very Clean; 390 HP Cummins ISX; Allison Auto. Trans.; 212" WB; 20K F/A; 46K Full Locking Rears; Wetline; Air Trac Susp.; 18,400 lb. Chassis Weight; 15" Frame Behind Cab; 130" CT; 213,229 Miles; Sk. # 6768 - **\$68,250**

Morning Agenda



NOW OFFERING 1.5 DEC Recertification CREDITS



8:30 AM - 9:50 AM

Registration & Visit Vendors

DEC Recertification Points & Certified Crop Adviser Credits Available.
Please bring your Applicator Picture ID

9:55 AM

Opening Introductions and Announcements

Mike Stanyard

10:00 AM - 11:00 AM

Managing Corn to Deal with Weather Stressors In-Season

Alex Lindsey, Corn Physiologist,
Ohio State University

11:00 AM - 11:15 AM

Morning Break

11:15 AM - 11:45 AM

Southern Rust: What You Need to Know for Management

Camilo Parada Rojas, Plant Pathologist,
Cornell University

11:45 AM - 12:15 AM

Marketing with Michael

Michael Howlett
Howlett Farms

Cornell Cooperative Extension does not endorse or recommend any specific product or service. This program is solely intended to educate consumers about their choices.

Afternoon Agenda

12:15 PM - 1:15 PM

Lunch & Visit Vendors

1:15 PM - 2:15 PM

Evaluation of Nitrogen Fixing Biologicals

Charlie White, Soil Fertility and Nutrient Management, Penn State University

2:15 PM - 2:30 PM

Afternoon Break

2:30 PM - 3:15 PM

Herbicide-Resistant Weeds and their

Management in New York Corn Production

Vipan Kumar, Weed Scientist,
Cornell University

3:15 PM - 3:30 PM

What We Learned About Corn Leafhopper

and Corn Stunt This Year
Mike Stanyard, CCE, NWNV Team

3:30 PM - 3:45 PM

Our Friend, Nate Herendeen

Save the Date!

Feb 11th, 2026

Soybean & Small Grains Congress

Registration Information

Registrations must be received by: January 1

Name: _____

Name: _____

Farm/Business Name: _____

Address: _____

County: _____

Phone: _____

Email: _____

Location Attending:

1/14/26 DoubleTree by Hilton, Henrietta

ONLY ONE LOCATION THIS YEAR

Attending:

_____ \$60.00

To Register and Pay Online:

<http://nwnvteam.cce.cornell.edu/events.php>

To Register and Pay by Check:

Send completed form and check made payable to: **CCE NWNV Team**.

Mail to:

NWNV Team

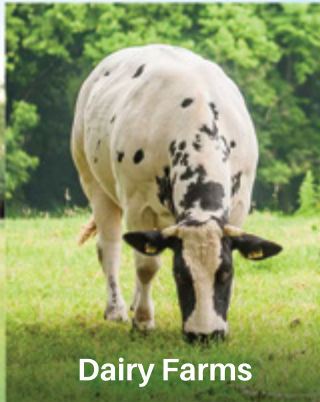
Attn: Ashley Fazio

420 East Main Street

Batavia, NY 14020

Accommodations for persons with special needs may be requested by contacting Ashley Fazio at: 585-549-0630 by 12/29/25.

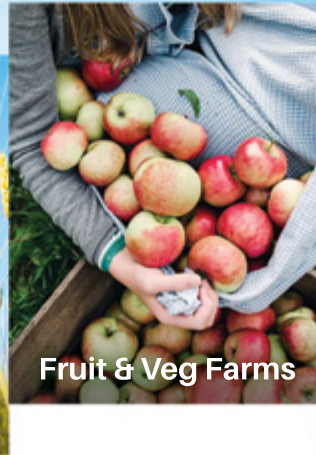
New York Farm Insurance Specialists Your livelihood. Covered.



Dairy Farms



Grain Farms



Fruit & Veg Farms



Crop Insurance



Call (585) 624-2474
www.nyfarminsurance.com

19 W. Main St., PO Box 192 | Honeyoye Falls, NY 14472 | jjoseph@mitchelljoseph.com

PARTNERING WITH LOCAL CORN GROWERS SINCE 2007 TO PRODUCE CLEAN RENEWABLE FUEL AND HIGH PURITY ALCOHOL

- Competitive bids for old & new crop corn - payment within 2 days
- High protein (32%+), low fat distillers grain
- Bulk commodity and grain transportation services



4141 Bates Road • Medina, New York
wnyenergy.com • 585-798-9693



Winter Crop Planning for Western New York Dairy and Livestock Farms: Building a Strong Foundation for the 2026 Growing Season

Jodi Letham

Winter offers dairy and livestock producers a valuable pause in the production year—a chance to step back, evaluate field and forage performance, and make informed decisions that set the tone for the season ahead. In Western New York, where weather variability and tight harvest windows shape crop success, winter crop planning becomes more than a routine task; it is an investment in forage quality, soil health, and long-term resilience. The following priorities can help guide 2026 planning with clarity and purpose.

Understanding Soil as the Starting Point

Healthy soils drive feed quality and operational efficiency. As fields settle into winter dormancy, it's the ideal time to review soil test reports and identify where adjustments are needed. Maintaining pH between 6.2–6.8 supports nutrient uptake in most crops, while alfalfa requires slightly higher pH for root development and winter survival.

Producers should also consider the structural challenges left behind from 2025's harvest conditions. Compaction issues—often visible as areas of reduced emergence or persistent wet spots—can limit forage yield potential well into the next season. Using winter to map these areas, whether through yield monitors, drone images, or simple observation, allows farms to plan ahead for targeted tillage, improved rotations, or soil-building cover crops.

Aligning Fertility Planning with Forage Goals

Manure is one of the most powerful tools available to livestock farms, and winter planning should focus on using it strategically. Allocating manure to fields with lower phosphorus and potassium while matching application method to soil type helps stretch fertilizer dollars and strengthens nutrient efficiency.

Nitrogen decisions deserve special attention, especially as spring weather patterns continue to shift. Split applications—starter at planting and sidedress during early vegetative stages—provide flexibility and protect yield potential. Stabilizers may be beneficial when manure is surface-applied or when soils are prone to volatilization losses. As sulfur deficiencies have become increasingly common across the region, incorporating 10–20 lb. of sulfur per acre into forage fertility programs supports protein formation and fiber digestibility.

Selecting Varieties That Support Livestock Performance

Seed selection is one of the most important choices a farm makes each winter. For corn silage systems, today's hybrids offer not just yield, but meaningful differences in digestibility, starch availability, and disease resistance. Western New York producers generally see the best balance of tonnage and crop safety with 92–108-day relative maturity ranges, but hybrid consistency across variable years should remain a top priority.

Forage programs built around alfalfa or mixed stands benefit from selecting varieties with strong disease packages, along with improved leaf-to-stem ratios and cutting tolerance. Grass species such as meadow fescue or improved orchardgrass can strengthen stand persistence and forage quality, particularly on heavier soils where pure alfalfa can struggle.

Small grains like winter triticale or cereal rye continue to be valuable tools for filling forage gaps. Success with these crops depends on clear planning now: identifying intended harvest timing, ensuring early-spring nitrogen availability, and aligning acreage with forage inventory needs.

Setting the Stage for a Successful 2026

Winter planning is not simply a checklist, it is an opportunity to align soil health, nutrient management, and seed selection with the needs of your herd and the realities of your land base. By evaluating soil conditions, sharpening fertility strategies, and selecting varieties that support both yield and quality, Western New York dairy and livestock farms can move into spring with confidence.

Thoughtful decisions made this winter will influence forage inventories, cow performance, and crop system resilience well into the next growing season. As we prepare for 2026, taking a proactive, informed approach will continue to strengthen the foundation of our farms and the livelihoods they support.



Jodi Letham doing some fall soil sampling in WNY.

Annual Farm Business Summary and Analysis Season Is Right Around The Corner

John Hanchar

Summary

- Sound financial planning and control are keys to successfully managing a farm business, including managing risks and uncertainties faced by the business.
- The next few months present good opportunities to evaluate financial management practices.
- The NWN Dairy, Livestock, and Field Crops Program has the capacity to work with a variety of producers as they seek to improve their business' financial management practices.

Background

Winter months present farm business owners with opportunities to undertake planning efforts for the purpose of improving results. Efforts benefit from measuring past, and expected financial performance. Measuring is characteristic of sound financial planning, and control. Research suggests that financial management practices, including annual farm business summary and analysis, key components of planning and control functions, best position a business for success.

Characteristics of Effective Farm Financial Management

Effective farm financial management emphasizes sound financial planning, and control.

Financial planning is using financial information to answer the following questions.

1. "Where is the business now?" Include, "How is the farm business positioned to handle financial adversity, risks, uncertainties, for example, due to setbacks resulting from poor planting and growing conditions and, or a less favorable economic outlook?"
2. "Where do you want the business to be in terms of financial condition and performance?"
3. "How will you get the business to where you want it to be?"

Financial planning practices include

- generating financial statements (balance sheet, cash flow statement, and income statement)
- using results to identify strengths and weaknesses, including identifying strategies to mitigate financial, and others risks
- developing projections, including those associated with proposed changes to the farm business

Financial control involves measuring financial condition, and performance over time to determine whether or not the business is achieving desired results. If not achieving desired results, then ask, "Why not?" to identify, and implement needed changes.

As the end of the year draws near, the next few months present good opportunities to examine your business' financial management practices. As a farm business owner, you have financial objectives and goals. These direct your efforts. Do you measure the financial condition of your farm business using the balance sheet? Do you measure financial performance using the cash flow statement and income statement? If you don't measure financial condition and performance, then achieving desired financial results is less likely.

The statement "If you can't, or don't measure it, then you can't manage it" with its emphasis on measuring outcomes underlies the value, and need for sound financial management.

Cornell University's Dairy Farm Business Summary (DFBS) Program

- Objectives of the DFBS Program include: provide producers with opportunities to analyze the business' production and financial situation, set future goals, and make sound financial decisions; help managers to better understand the business' ability to handle risks and uncertainties.
- The DFBS also allows producers to compare their business performance to that of other dairy farms.
- The summary and analysis for each farm includes profitability analysis, balance sheet analysis, analyses of annual cash flows and repayment ability, capital and labor efficiency, as well as analyses of the cropping, and dairy aspects the business.

Annual Arm Business Summary and Analysis Season Is Right Around The Corner Cont.

Financial Statements for Agriculture (FISA) Program

- FISA is a computer based spreadsheet program that can be used by all types of farm businesses to achieve objectives similar to those of the DFBS Program.
- In practice, FISA's ability to provide peer to peer comparisons is limited.
- The summary and analysis for each farm includes profitability analysis, balance sheet analysis, analyses of annual cash flows and repayment ability, as well as some capital efficiency measures and analysis. The program does not summarize and analyze production aspects of the business.

Farm Business Summary and Analysis with the NWNY Dairy, Livestock, and Field Crops Program

If you are interested in improving your business' ability to practice sound financial management, then please contact us to learn more about some of the tools available and their value and, or to discuss plans for completing a farm business summary and analysis for 2025. Owners of all types of farm businesses are encouraged to contact us. The NWNY Dairy, Livestock, and Field Crops Program has the capacity, using the above tools, to work with farm business owners to develop valuable farm business summary, and analysis. The NWNY team has the capacity and desire to work with a variety of farm businesses -- dairy (small, medium, and large; conventional; organic; grazing; and others), field crop, livestock, and others.



FULLY FOCUSED ON SUPPORTING YOUR VISION.



At Farm Credit East, the future has never been clearer.

Today, there are plenty of distractions in agriculture to sway producers and their partners from the task at hand. But Farm Credit East maintains the same mission-driven strength that helps both our teammates and customer-owners stay focused on the future. We're proud to meet the credit and financial needs of Northeast farming, forestry, fishing and agribusiness, all while gaining new perspective ourselves.

farmcrediteast.com | 800.562.2235

Crop Growers crop insurance from Farm Credit East is an equal opportunity provider.

Loans & Leases
Accounting Services
Profitability Consulting
Tax Preparation & Planning
Appraisals
Estate Planning
Beginning Farmer Programs
Crop & Livestock Insurance



Dairy Grant Round-Up

Margaret Quaassdorff

Dairy farmers, processors and technical assistance providers in New York have access to a growing set of grant programs. These funds can help to modernize operations, improve sustainability, and bring innovative practices to your dairy farm or processing facility. Below are several key grant opportunities with deadlines and eligibility details.

**I am looking to collaborate with farmers on a Research & Education or Research for Novel Approaches Grant, so please reach out if you are interested, or have an idea for an innovative project or management practice you would like to try on your farm.

1. Northeast Sustainable Agriculture Research & Education (NESARE) Grants for Dairy Farmers <https://north-east.sare.org/grants/>

- **Farmer Grant Program**
 - Designed for farmers who want to test new ideas through on-farm trials, demonstration projects, marketing, surveys, or other research/education work.
 - Typical award range: **\$5,000 to \$30,000**.
 - Eligible applicants include commercial farm owners and farm employees in the Northeast.
 - **Deadline for 2026 proposals: December 9, 2025, at 5 p.m. EST.**
 - Note: Funds are paid on a reimbursement basis, and these grants are not intended for large capital purchases (like barns or major equipment).
- ****Research & Education, Research for Novel Approaches, and Professional Development Grants**
 - These “large grant” programs support sustainable agriculture projects beyond a single farm including research, innovation, and training.
 - Typical award range: **\$30,000 to \$250,000**
 - **Deadline: February 2, 2026, 5 p.m. EST.**
 - Eligible work includes applied research, pilot projects, or capacity-building among service providers, educators, and farmers.

Why Dairy Producers Should Consider NESARE Grants:

Even though SARE grants are not for heavy capital expenses, they're ideal for innovation: testing a new grazing method, experimenting with alternative feeds, piloting a rotational grazing system, or doing demonstration work that benefits other farmers. NESARE emphasizes sustainability, resilience, and long-term farm viability.

2. Northeast Dairy Business Innovation Center (NE-DBIC) Dairy Grants nedairyinnovation.com

- **Dairy Farm Improvement & Modernization Grant**
 - For dairy farmers and Technical Assistance providers to fund a wide range of projects that prioritize long-term farm viability, climate and economic resilience.
 - Grant size typically ranges from **\$15,000 to \$100,000**, with a **25% match** required.
 - **Deadline for 2026 proposals: December 4, 2025, at 2 p.m. EST.**
 - Eligible activities may include piloting new or uncommon technologies or management strategies, farm-scale technology improvements, upgrades to outdated equipment or management systems, or continuous improvement projects.
- **Other NE-DBIC Grants**
 - Through Farm Credit East and other partners, NE-DBIC supports agritourism grant programs for dairy operators, helping to build regional networks and value-added opportunities. Check their website for application opening dates.

Why Dairy Producers Should Consider NE-DBIC Grants

This program prioritizes systems-level and/or innovative approaches that enhance farm business viability, reduce climate impacts, improve milk quality or value, improve worker conditions, and/or increase resilience to challenges. Topic areas could include feed and nutrition management, animal health and comfort, milking systems, labor efficiency, animal management, new and young farmer engagement, farm transition, cooperative milk production, or other areas that clearly benefit dairy operations.

Please reach out if you would like to collaborate on a grant project, or if you need assistance in reviewing a grant proposal before submission.



2026 FORAGE CONGRESS

01.28.26

—
The Nunda Ranch

2278 NY-436, Nunda,
NY 14517

—
VENDOR REGISTRATION:
12.08.25



<https://nwnyteam.cce.cornell.edu/event.php?id=2685>

Cornell Cooperative Extension of Livingston County
NWNy Dairy, Livestock & Field Crops Team
3 Murray Hill Drive
Mount Morris, NY 14510

Postmaster:
Dated Material
Please Expedite

Nonprofit Org.
U.S. POSTAGE
PAID
Permit No. 298
Rochester, NY

UPCOMING EVENTS

December 12

Pork Quality Assurance Training

6 PM : CCE Livingston :

Registration:
<https://tinyurl.com/PQALiv>

January 14

2026 Corn Congress

9 AM - 4 PM : DooubleTree by Hilton,
Henrietta : \$60

Registration:
[https://nwnyteam.cce.cornell.edu/
event.php?id=2637](https://nwnyteam.cce.cornell.edu/event.php?id=2637)

January 28

2026 Forage Congress

The Nunda Ranch : TBD

Registration:
[https://nwnyteam.cce.cornell.edu/
event.php?id=2685](https://nwnyteam.cce.cornell.edu/event.php?id=2685)