



## NNY Weather Summary for April 1 through July 31, 2022.

The table below summarizes rain and GDD so far for the 2022 growing season here in the North Country – April 1<sup>st</sup> through the end of July. The variable weather conditions continue across the North Country. About 75% of the North Country locations listed in the table below got off to a very wet start, but the rest started quite dry. Of those that started wet, many have become too dry – but some have also remained wet. There is not one description that suits all of the NNY region this year.



----- Accumulation from April 1 thru July 31, 2022 -----

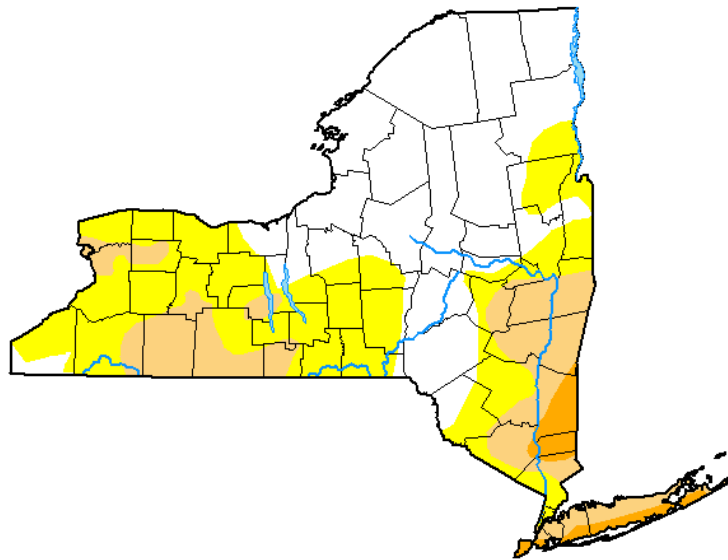
County	Town/Village	--- Precipitation, in ---			- GDD Base 50F -		GDD Base 40F
		Total	DFN	Days	Total	DFN	Total
Clinton	Champlain	20.93	4.57	57	1385	17	2401
	Ellenburg Depot	21.23	5.52	63	1246	12	2208
	Beekmantown	17.48	3.00	53	1389	0	2405
	Peru	15.92	2.45	51	1393	7	2408
Essex	Whallonsburg	14.45	-1.67	48	1445	43	2463
	Ticonderoga	<b>10.31</b>	<b>-5.55</b>	<b>44</b>	<b>1505</b>	39	<b>2535</b>
Franklin	Bombay	16.90	0.24	56	1377	32	2403
	Malone	21.78	5.99	61	1347	<b>83</b>	2355
	Chateaugay	<b>23.89</b>	<b>7.40</b>	<b>66</b>	1307	42	2302
Jefferson	Rodman	18.79	3.77	55	1311	-3	2327
	Cape Vincent	12.46	-1.03	47	1276	72	2301
	Evans Mills	14.43	-0.88	48	1432	12	2469
	Redwood	15.36	-1.37	45	1357	15	2382
	Antwerp	17.55	2.47	53	1317	32	2347
Lewis	Talcottville	15.85	0.13	55	<b>1109</b>	-18	<b>2080</b>
	Martinsburg	15.76	1.49	56	1280	13	2304
	Carthage	16.09	1.29	57	1314	27	2339
St. Lawrence	Gouverneur	17.55	1.25	54	1257	30	2287
	Hammond	16.70	0.63	51	1277	31	2308
	Ogdensburg	17.56	1.92	51	1365	39	2395
	Canton	21.87	5.28	59	1247	<b>-86</b>	2255
	Madrid	18.87	3.20	55	1251	-59	2261
	North Lawrence	19.62	3.35	64	1339	-13	2361
	Louisville	17.78	1.14	57	1289	-21	2295
<b>Average</b>		<b>17.46</b>	<b>1.86</b>	<b>54</b>	<b>1326</b>	<b>14</b>	<b>2341</b>

\* Precipitation in inches, temperature in Fahrenheit, DFN = difference from 15-year average, Days = days with precipitation. Calculated from [ACIS NRCC 2.5-mile gridded datasets](#). **High** and **low** values within each column are highlighted.

Essex county continues to be dry and its SE quarter has been classified as D0, Abnormally Dry beginning in early August. Essex joins the lower Hudson Valley where a drought has been spreading and worsening since mid-June. The August 16<sup>th</sup> Drought Monitor map is below. Western and Central NY continue their dry conditions and drought as well, that began as early as mid-May.

## U.S. Drought Monitor New York

**August 16, 2022**  
(Released Thursday, Aug. 18, 2022)  
Valid 8 a.m. EDT



Drought Conditions (Percent Area)

	None	D0-D4	D1-D4	D2-D4	D3-D4	D4
<b>Current</b>	45.28	54.72	20.74	3.24	0.00	0.00
<b>Last Week</b> 08-09-2022	45.69	54.31	13.79	1.32	0.00	0.00
<b>3 Months Ago</b> 05-17-2022	91.32	8.68	0.00	0.00	0.00	0.00
<b>Start of Calendar Year</b> 01-04-2022	100.00	0.00	0.00	0.00	0.00	0.00
<b>Start of Water Year</b> 09-28-2021	95.19	4.81	0.00	0.00	0.00	0.00
<b>One Year Ago</b> 08-17-2021	93.91	6.09	1.13	0.00	0.00	0.00

Intensity:

- None
- D0 Abnormally Dry
- D1 Moderate Drought
- D2 Severe Drought
- D3 Extreme Drought
- D4 Exceptional Drought

The Drought Monitor focuses on broad-scale conditions. Local conditions may vary. For more information on the Drought Monitor, go to <https://droughtmonitor.unl.edu/About.aspx>

Author:

Richard Tinker  
CPC/NOAA/NWS/NCEP

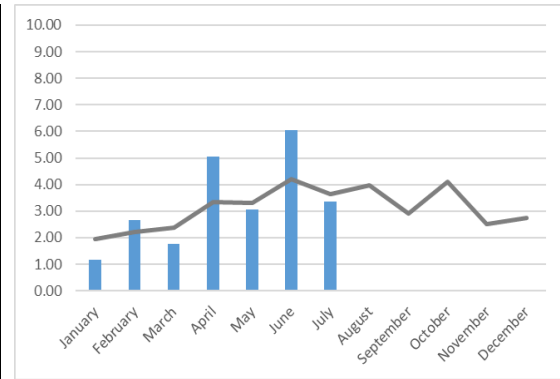
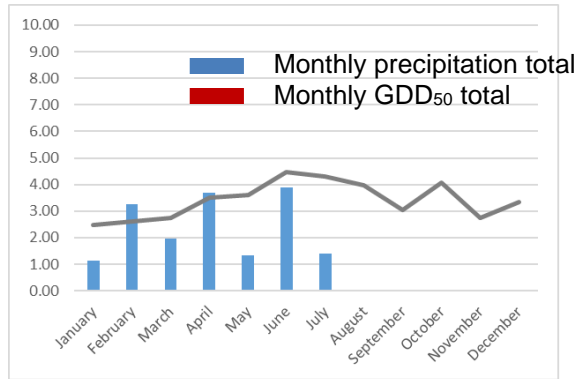


[droughtmonitor.unl.edu](https://droughtmonitor.unl.edu)

Only 5 of the 24 North Country locations listed above are below average April-through-July precipitation, but that is not the full story. For some locations, precipitation dropped off in July and August and dry conditions are developing. Ticonderoga has been dry all season and is about 2-3 days warmer than average. Beekmantown is exactly at average GDD<sub>50</sub> totals and was wet earlier in the season but has had a very dry July and August. Only the Ellenburg area has been drier, seeing just 1” of rain from about July 15 to August 15. The last 2 locations depicted in graphs below, Chateaugay and Canton, have both been wet all season. They have had differing heat accumulations, however. Chateaugay is about 3 days ahead of normal and Canton is 3-4 days behind normal.

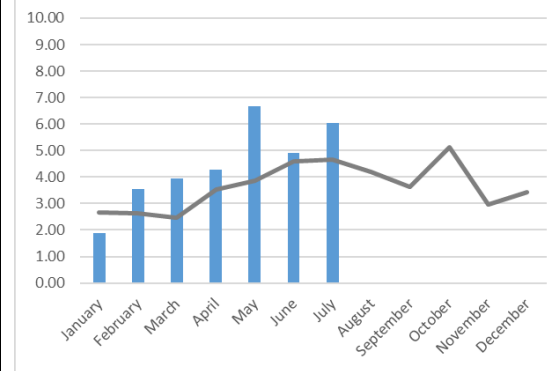
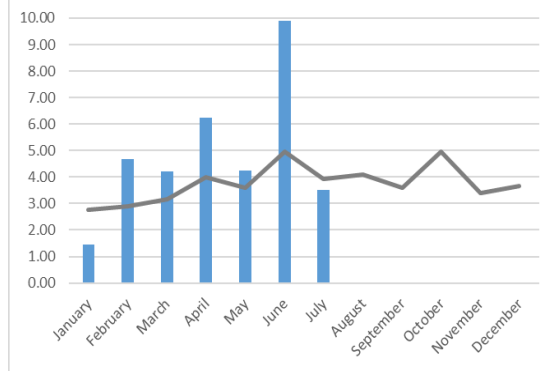
Most of the 24 locations listed in the table above have been near the normal pace of GDD<sub>50</sub> accumulations, with just 6 locations receiving below normal heat this so far this season. Malone has been the most uncharacteristically warm location on the list and is 4-5 days ahead of schedule, heat-wise. Canton has been the coolest (compared with normal temps) and is 4-5 days behind the 15-year norm. The average GDD<sub>50</sub> accumulation across the North Country is about 1 day ahead of normal.

Monthly precipitation (blue) and GDD<sub>50</sub> (red) totals for four North Country locations (Ticonderoga, Beekmantown, Cheateaugay and Canton) for January through July 2022. 15-year averages for each location are shown in gray.



Ticonderoga

Beekmantown



Cheateaugay

Canton

Additional resources:

1. [Cornell Cooperative Extension's North Country Regional Ag Team Web Resources](#)
2. [New York Integrated Pest Management \(NYSIPM\) Web Resources](#)
3. [National Oceanic and Atmospheric Administration \(NOAA\) Climate Prediction Center](#)
4. [US Drought Monitor](#)
5. [Northeast Regional Climate Center](#)
6. [NYS Mesonet](#)

For more information about field crop and soil management, contact your local Cornell Cooperative Extension office or your CCE Regional Field Crops and Soils Specialists, Mike Hunter and Kitty O'Neil.

Kitty O'Neil  
CCE Canton Office  
(315) 854-1218  
[kitty.oneil@cornell.edu](mailto:kitty.oneil@cornell.edu)

Mike Hunter  
CCE Watertown Office  
(315) 788-8450  
[meh27@cornell.edu](mailto:meh27@cornell.edu)

Our Mission

“The North Country Regional Ag Team aims to improve the productivity and viability of agricultural industries, people and communities in Jefferson, Lewis, St. Lawrence, Franklin, Clinton and Essex Counties by promoting productive, safe, economically and environmentally sustainable management practices and by providing assistance to industry, government, and other agencies in evaluating the impact of public policies affecting the industry.”

*Building Strong and Vibrant New York Communities*

Cornell Cooperative Extension provides equal program and employment opportunities. NYS College of Agriculture and Life Sciences, NYS College of Human Ecology, and NYS College of Veterinary Medicine at Cornell University, Cooperative Extension associates, county governing bodies, and U.S. Department of Agriculture cooperating.