

NNY Western Bean Cutworm 2019 Report

The purpose of the Western Bean Cutworm traps are deployed to monitor moth presence and determine the peak flight. We cannot use trap counts to determine when a field should be sprayed with an insecticide. Traps help us identify fields at risk and when scouting should take place. Management of the WBC is based on egg masses and/or small larva found on the corn plants. It is also important to note that trap counts do not correlate to the amount of WBC damage to expect in the corn field. In fact, in 2016, we monitored a site that only caught 190 WBC moths for the entire season and that particular field had 18.75% of the ears with WBC feeding damage.

Northern NY was again the hotspot in the state in 2019, with 21 of the highest 25 WBC moth trap catches statewide (field corn monitoring sites only). There were 66 WBC traps located in 29 NYS counties in 2019 (see Map). Thirty three WBC traps were monitored weekly in corn fields in NNY. The 33 WBC traps in NNY averaged 902 moths per trap which is higher than 2018 average of 644 moths and the 2017 average of 876 moths. This monitoring project continues to reaffirm that we have large population densities of Western Bean Cutworm in NNY every year.

We would also like to thank Joe Lawrence -PRO-DAIRY, Jessica Prospers -CCE Franklin County, Sara Bull - CCE Clinton County, Carly Summers -CCE Essex County, Mike Davis -Willsboro Research Farm and Glen Yousey -Seedway for their assistance with weekly reporting of WBC trap catches.

Western Bean Cutworm populations continue to increase in NYS each year. This is a corn pest that needs to be monitored closely to prevent corn yield and quality losses in the future. The WBC trap network will continue in 2020 as we learn more about this pest and continue to develop best management strategies. If you have any questions or would like more information about Western Bean Cutworm please contact North Country Regional Ag Team Regional Field Crop Specialists, Mike Hunter and Kitty O'Neil.

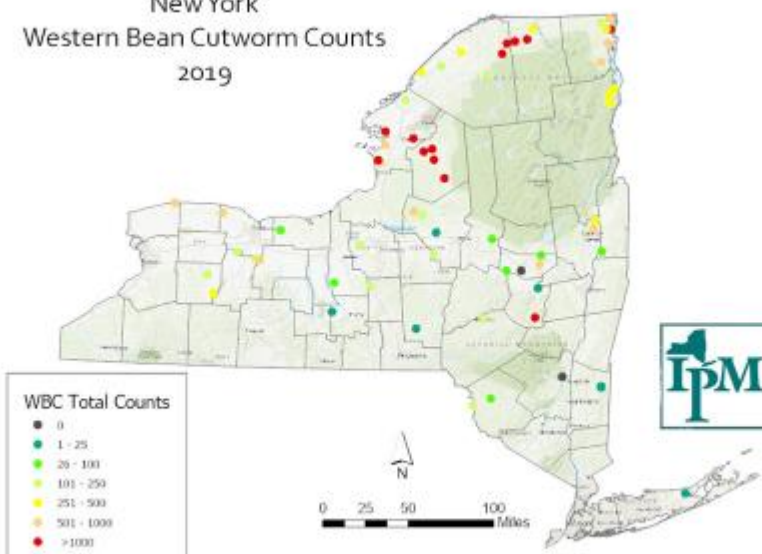
Mike Hunter

Jefferson County CCE Office, Watertown
(315)788-8450
meh27@cornell.edu

Kitty O'Neil

St. Lawrence County CCE Office, Canton
(315)854-1218
kao32@cornell.edu

New York Western Bean Cutworm Counts 2019



New York Western Bean Cutworm Counts 2019

